

2017 ANNUAL REPORT



TABLE OF CONTENTS

01	About Dining for Women	18	Advocacy Program
02	2017 Highlights at a Glance	20	Financial Overview
03	Leadership Message	21	Board & Staff
04	Member Education & Engagement Program	22	Volunteer Leaders
07	Mentoring a New Generation of Global Citizens	24	Founders' Circle
08	Grants Program	25	Corporations, Foundations, and Organizations
12	Partnership Program	26	Donors
17	Impact of 2017 Grants and Partnerships		

ABOUT DINING FOR WOMEN

Dining for Women is...

Dining for Women is dedicated to ensuring gender equality and ending extreme poverty by investing in women and girls in the developing world and fostering global citizens here in the U.S. With more than 400 chapters and 8,000 active members, Dining for Women is the world's largest educational giving circle focused on women and girls.

► Our Vision

We envision a world where the lives of women and girls have been transformed and extreme poverty has been reduced because Dining for Women connected people in creative, powerful ways that assure gender equality.

► Our Mission

Through collective giving circles, Dining for Women inspires, educates, and engages people to invest in grassroots programs that make a meaningful difference for women and girls living in extreme poverty in developing countries.

We Believe...

- All women have the right to equality, dignity, and security and an opportunity to be self-sufficient.
- Ensuring gender equality is key to overcoming poverty and transforming families, cultures, and future generations.
- Education creates awareness. Awareness develops into interest. Interest fuels action.
- Collaboration empowers giving and transforms the giver and the receiver.
- We act with integrity and purpose.



OH, Solon-1 chapter

2017 HIGHLIGHTS AT A GLANCE



Dining for Women invested about \$850,000 in **22 grants and partnerships** in 2017.

Through our Featured Grants and Partnerships, we directly impacted **70,776** women and girls and indirectly impacted **409,360** family and community members.

We awarded our second Partnership Grant to the **Peace Corps** in support of girls' education around the world.

We announced a partnership with **UNICEF USA** to support Syrian refugee women and girls in Jordan and internally displaced women and girls in South Sudan.

Our **Advocacy Program** was launched to influence U.S. funding and policy in support of women and girls in the developing world.

Elevate Destinations was selected as Dining for Women's official travel provider, and we re-launched our Travel Program with member trips planned to Rwanda and Guatemala in 2018.

We participated in the activities of the **United Nations Commission on the Status of Women (CSW61)** in New York City for the first time. The UNCSW is the principal global intergovernmental body exclusively dedicated to the promotion of gender equality and empowerment of women in the world.

We announced our 15th anniversary **Knowledge is Power National Conference** to be held in Washington, D.C., May 4-5, 2018 at the United States Institute of Peace.

Representatives from Dining for Women participated in the **first-ever Summit for U.S. Giving Circle Networks** in Grand Rapids, MI, funded by the Bill and Melinda Gates Foundation and the Schusterman Family Foundation.

AMPLIFYING OUR WORK FOR GREATER IMPACT

Since 1990, the number of people living in extreme poverty has been cut in half—a cause for celebration. But, there are still 800 million people, most of them women and children, who are suffering. That is why Dining for Women is striving to make a greater impact in everything we do.

Through our grant making, we have done excellent work supporting on-the-ground projects in 65+ countries. This work is guided by a simple truth: investing in women and girls can pull whole families, communities, and even countries out of extreme poverty. In 2017, we embarked on a “Year of Education” to ensure the continued effectiveness of our grant making and to explore new options for making high-impact investments on behalf of you, our members and donors.

At the same time, we are strengthening and broadening our work *beyond our grant making.*

We launched our Advocacy Program because we can have a larger impact if we influence national and international policies and systems that would end extreme poverty and gender inequality. The power of our advocacy comes from the grassroots: our thousands of members raising their voices in support of women and girls internationally.

Partnering with others in the larger global movement will also move the needle on the root causes of poverty and gender inequality. In 2017, we continued our Peace Corps Partnership in

support of girls' education, and we joined with UNICEF USA to address the greatest humanitarian crisis of our time: refugee women and girls in Jordan and South Sudan.

We also laid the foundations to expand our membership through chapter growth. By educating and engaging members about the plight of women and girls, we are creating global citizens who are powerful agents of change.

Our Grants, Partnerships, Member Education and Engagement, and Advocacy Programs all serve one purpose—to fulfill our mission of ensuring gender equality and improving the lives of women and girls in the developing world.

That is the mission our co-founders set out to achieve when they launched Dining for Women. After 14 years of passionate work, our co-founder Marsha Wallace stepped down from our Board of Directors in January 2017. Over the past year, we saw Marsha's vision of advocacy and travel come to fruition. We are proud to continue the work and many achievements that she and co-founder Barb Collins began with that first birthday dinner in 2003.

This report clearly demonstrates the impact you, our members, are having. Your passion for women and girls is clear, and your commitment is making a difference. We hope that in these pages you also recognize the impact that Dining for Women is having on *you* as you learn about and are inspired by the strength and courage of women and girls around the world.



Susan Stall
Susan Stall
2017 Board Chair



Beth Ellen Holimon
Beth Ellen Holimon
President

MEMBER EDUCATION & ENGAGEMENT PROGRAM

EDUCATION CREATES AWARENESS. AWARENESS FUELS ACTION.

Dining for Women is an educational giving circle with a simple model. Small groups of people get together monthly to share a meal, learn about the challenges affecting women and girls globally, and donate their “dining out” dollars to projects that reduce poverty and promote gender equality.

Our model is based on the powerful idea that educating people here in the U.S. creates global citizens who are aware, informed, and empowered to change the world for women and girls.

Each month, Dining for Women provides comprehensive educational materials to our members about our monthly Featured Grantee. Through videos, fact sheets, and other presentation materials, members learn about the country being featured, the challenges faced by the women and girls, and how member donations will be used to create change.

Since its inception, Dining for Women has educated more than 30,000 people... that's 30,000 global citizens informed about the plight of women and girls globally and taking actions to address these monumental challenges.

The Power of Food

Food is central to every Dining for Women chapter meeting. Dinner, lunch, brunch, appetizers and wine, coffee and dessert...every chapter does it a little differently, but there is always food. As our Dinner Affirmation states, “*we recognize the powerful associations of women to food, life, and nurture in all cultures.*” We create a special bond and a sense of community by coming together and sharing a meal.

Food is also part of the learning experience. Many Dining for Women chapters enjoy preparing traditional dishes from the country being featured, using our online library of recipes and our popular monthly blog, *The Proven Platter*.

OR, Portland-3 chapter



Chapters find many other creative ways to learn about and connect with the women and girls we support, including guest speakers from the featured country. When Burma Humanitarian Mission was our Featured Grantee in September 2017, our Winston-Salem, NC chapter reached out to Karenni refugees from Burma who were living in their community. Several Burmese women attended the chapter dinner and gave members the chance to try on traditional Karenni dress.



NC, Winston-Salem-1 chapter

► Member Travel Program

Our Travel Program is another way that we connect members with the women and girls we support. This program provides meaningful and inspirational travel experiences for our members. Our goal is that these experiences will deepen our members' awareness and understanding of the issues facing women and girls in the developing world, while fostering strong bonds of friendship among travelers.

In 2017, we selected **Elevate Destinations** as our exclusive travel provider. Elevate Destinations is a social enterprise that specializes in travel programs for nonprofit organizations while also empowering and respecting the local destinations. Dining for Women works with Elevate to offer a range of trips to our members, including trips to Rwanda and Guatemala in 2018.

► Growing Our Movement

As part of our 2020 Vision, we want to expand the number of Dining for Women chapters so we can impact even more women and girls. In 2017, we launched the **8,000 Ambassadors Campaign**, which harnesses the passion and collective power of our 8,000 members to spread the word about Dining for Women and help us grow. We kicked off this campaign with the **Biggest Chapter Meeting Ever**—a live webcast on International Women's Day that connected chapters and members from across the U.S.

In 2017, we also implemented an online system that allows individuals to find Dining for Women chapters through a simple zip code search. This new tool has made it quicker and easier for potential members to join Dining for Women.



Our Rancho Cordova, CA chapter celebrated International Women's Day with the first Muslim Jr. Girl Scout troop and their mothers. The girls presented the monthly grantee at the meeting and also contributed \$201 to Dining for Women from a fundraiser. The event brought together a diverse group who share a common goal: supporting women and girls around the world.

Diversity and Inclusion

Dining for Women is striving to be more diverse and inclusive at all levels of our organization. In 2017, we convened the Diversity and Inclusion Committee consisting of members of many colors and ethnicities and with a cross-section of faiths, ages, income levels, sexual orientations, and geography. To date, committee members have focused on educating themselves about diversity and inclusion and how these issues relate to our vision.



GA, Atlanta-1 chapter



Greensboro, NC
10-Year Chapter

I have a wonderful, diverse group of women who not only enjoy each other's company and the food, but most of all they are passionate about helping women around the globe.



Shashi Khanna, Chapter Leader

MEMBERSHIP NUMBERS

407 chapters in 44 states
across the U.S.

6 affiliated groups
internationally

8,000 active
members

\$1,000,000 raised annually through
monthly chapter donations

30K+ people educated
since inception

\$35 average
donation

700+ volunteer
leaders

MENTORING A NEW GENERATION OF GLOBAL CITIZENS



SC, Greenville-12 chapter with Dining for Women Co-Founder Barb Collins in front row (in blue) and Chapter Leader Brooke Hammond beside her on the right.

Dining for Women Co-Founder Barb Collins believes strongly in the power of youth—a belief that no doubt comes from her own younger years. When she was eight years old, her father moved her family from the suburbs to the inner city of Minneapolis at a time when people were fleeing the city due to the racial unrest in the 1960s. Her father believed that you can't fix the problem unless you were where the problem lives, where change must begin.

Barb has seen this same spirit in Brooke Hammond, a high school senior in Greenville, SC. In 2016, Brooke started a Dining for Women chapter with her high school friends, and Barb has been mentoring her along the way.

Social media first sparked Brooke's awareness of the problems faced by women and girls. "I read about things I never knew, like the culture of rape and sex trafficking in other countries. I know that I am privileged. That could be me." In her economics textbook, she learned about why investing in women is so smart.

Brooke was looking for ways that she could make a difference when she heard about Dining for Women. In another example of what Barb often calls Dining for Women's "strategic serendipity," Brooke's family had a prior connection with

Barb—her parents had worked with Barb's husband, Greg. From this connection, the friendship between Barb and Brooke grew, and a new and unique Dining for Women chapter flourished.

Brooke's chapter is not the traditional monthly potluck dinner. The group meets for tailgating before school football games, for holiday celebrations, and, every year, Brooke has a birthday dinner/chapter meeting where she asks friends to support Dining for Women.

She hopes to take Dining for Women with her when she goes to college and is confident her high school chapter will continue as she is grooming her younger sister to take over the leadership.

"Through Brooke's chapter, I am learning about ways to appeal to the younger generation," says Barb. "This fuels a need inside me to engage the younger generation on a mass scale. If we start young, we can foster that next generation of global citizens and create much more change in the world. This gives me hope."

For Brooke, being a global citizen is all about awareness. "It's about recognizing that it's not all about you. Diversity should be celebrated and embraced. We're all different, but we're all equal."

OUR GRANTS PROGRAM



Through our Grants program, Dining for Women funds grassroots projects in more than 65 countries around the world. The projects we fund address a wide range of issues and needs, from education and vocational training to maternal health, food security, human trafficking, and violence against women and girls.

Dining for Women has a professional and highly competitive process in order to ensure we are funding the most impactful projects. We screen, vet, and evaluate about 200 organizations each year. Because many of these are small, grassroots organizations, we often coach them before, during, and after our application process, a service that is unique to Dining for Women. Once a grant is awarded, we work collaboratively with our grantees to ensure the desired outcomes are met and their projects are successful, and we review and track progress through regular reports.

2017 Featured Grants



Mith Samlanh

Dining for Women awards 12 Featured Grants per year that range in amounts from \$35,000 to \$50,000. Grantees are assigned to be featured in a specific month and are promoted at chapter meetings and in newsletters, social media, and online communications.

Mith Samlanh | Cambodia **\$50,000**

Protects the fundamental rights of urban, marginalized girls by offering them shelter, vocational training, support services, and reintegration with their families.

Etta Projects | Bolivia **\$39,825**

Creates sustainable solutions to improving health by training local village women to become Health Promoters, empowering them to serve as first responders, save lives, and advocate for improved health outcomes.



Chicuchas Wasi

Chicuchas Wasi | Peru \$50,000

Provides free, quality primary school education and leadership training for underserved, rural indigenous girls.

Caravan to Class | Mali \$42,260

Brings literacy skills to formerly nomadic women in order to improve their livelihoods as they are seeking a more settled life.

Mali Health | Mali \$45,378

Reduces maternal and child mortality by improving access to low-cost, quality primary care and encouraging women to join saving groups that help them pay for health care and income-generating activities.



Mali Health

Limitless Horizons IXIL | Guatemala \$50,000

Provides first generation Mayan Ixil girls with academic support, career training, life skills workshops, mentorship, and income-generating opportunities, including a community-led artisan program.

Sahar | Afghanistan \$50,000

Reduces child marriage by emphasizing education and leadership programs for young girls.

READ Global | Bhutan \$48,701

Enables rural Bhutanese women to gain financial literacy skills and income-generating livelihood skills, plus access to savings programs through advanced training programs at READ Centers.

READ Global



The Kenya Self-Help project was received with heartwarming reactions by my chapter members. The Voices of the women reached out to us. Amazing that something so simple as a Dignity Kit is life changing. What we in America take for granted is truly life changing for so many girls and women. So very proud of Dining for Women and Kenya Self-Help Project!



Marnie Walsh
Chapter Leader and Mentor, Asheville, NC



Kenya Self-Help Project



Burma Humanitarian Mission

Kenya Self-Help Project | Kenya

\$44,990

Provides a unique, integrated, in-school program of Girls Club education, life skills training, and material support to improve health awareness, school retention, and class performance while empowering girls to break menstrual taboos.

Burma Humanitarian Mission | Myanmar

\$47,276

Utilizes backpack medics to deliver health services and education programs to ethnically diverse, marginalized groups in conflict zones and remote areas.

Safe Hands for Girls | The Gambia

\$50,000

Changes deep-rooted cultural beliefs about Female Genital Cutting in The Gambia through education, awareness, and advocacy.

Advancing Girls Education in Africa | Malawi

\$50,000

Supports Girls Clubs that provide academic support and leadership development to vulnerable girls in Malawi.



Safe Hands for Girls

Sustained Grantees

Dining for Women's Sustained Grants are a larger, longer-term commitment that we make to previous Featured Grantees who are invited to submit proposals. Grants of \$60,000 are awarded over a three-year period.

2015–2017

Emerge Global | Sri Lanka

Teaches business and life skills and jewelry design to teenage girls who survived abuse so they can build their savings accounts and live healthy, self-sufficient lives.

Fistula Foundation | Ethiopia

Provides access to life-changing fistula surgeries for women, allowing them to live more integrated and productive lives.

One Heart World-Wide | Nepal

Prevents maternal and neonatal illness and death by providing safe births in rural Nepal.

Shining Hope for Communities | Kenya

Encourages mothers to seek regular prenatal, postnatal, and child welfare services in order to counteract high child illness and death rates.

2016–2018

Anchal | India

Expands employment in textiles and design for commercial sex workers so they can support themselves and their families through safe and dignified employment.

Girl Determined | Myanmar

Assists vulnerable teenage girls to avoid the pitfalls of trafficking, dangerous labor, and other forms of violence by facilitating the girls' recognition of their personal and group potential.

Health in Harmony | Indonesia

Helps local women establish organic vegetable gardens, wives of illegal loggers start small businesses, and widows establish goat herds.

Nepal Youth Foundation | Nepal

Provides vocational skills for girls freed from the Kamlari system of bonded servitude, thus enabling them to support themselves and their families.

Starfish | Guatemala

Leverages Starfish's success and female leadership to create an all-girl flagship school to empower and educate a generation of female leaders in rural Guatemala.

Fistula Foundation



Anchal



Emerge Global





OUR PARTNERSHIP PROGRAM

Impact Partnerships are a way for Dining for Women to make proactive investments that will create broad and lasting change for women and girls in the developing world. We join with others to be part of a larger global movement to make an even greater impact on the root causes of poverty and gender inequality, while also contributing to the growth and sustainability of Dining for Women.

Our Peace Corps Partnership



Dining for Women continued its support of girls' education around the world through its partnership with the Peace Corps. In 2017, we awarded a second Partnership Grant in the amount of \$70,000 to the Peace Corps Partnership Program (PCPP). This second grant is in addition to the \$100,000 that Dining for Women awarded to the Peace Corps' Let Girls Learn Program in 2016.

Dining for Women was one of the earliest donors to the Peace Corps' Let Girls Learn initiative. We know that educating girls is key to transforming lives, eradicating poverty, and ensuring gender equality. When a girl is educated, she is more likely to earn a viable living, delay marriage,

have fewer and healthier children, and improve the quality of life for herself, her family, and her community.

Both of Dining for Women's grants fund small-scale, grassroots, and community-led projects in the countries where Peace Corps Volunteers serve. One hundred percent of our donated dollars go directly to the projects, which address barriers to girls' education. Community members, including women, must be involved in the development, execution, and sustainability of the project. In addition, all communities must contribute a minimum of 25% of the project costs in either in-kind or cash support, which ensures that they have a vested interest in the projects.



As part of our Peace Corps Partnership, Dining for Women provided funding toward an Information, Communication, and Technology (ICT) Lab at the Bayet School in Bayet Village, Kyrgyz Republic. This grant provided computers and laptops and allowed teachers and students to be trained in basic computer skills, resulting in a significant improvement in computer literacy for the women and students.



IMPACT TO DATE OF PEACE CORPS PARTNERSHIP GRANTS

51

projects funded

2,992

individuals directly impacted

\$165,708

leveraged in additional funds from individuals,
corporations, and the local community

27

countries

66,265

individuals indirectly impacted



There are four anchor activities eligible for Dining for Women funding, all of which empower girls by removing social and structural barriers that prevent access to education and improving the overall quality of education.

GLOW (Girls Leading Our World) Camps and Clubs

These camps range from day-long sessions to week-long overnight programs to promote gender equality and empower young women.

Men as Partners (MAP) / Boys Respecting Others and Self (BROS)

These camps, workshops, seminars or training provide a gender lens through which men and boys can assess their own lives and gain knowledge about behavior changes proven to bolster gender equality.

STEM Projects for Girls

Science camps, clubs, competitions, seminars, or workshops encourage girls to pursue careers in science, technology, engineering, and math.

Business and Entrepreneurial Training for Girls

Local business leaders and Peace Corps Volunteers facilitate sessions to prepare girls to finish school and enter the workforce.

In Morocco, girls are told that soccer is only for boys—a barrier that not only contributes to extreme gender inequality, but also limits opportunities for girls to maintain a healthy lifestyle. Through its partnership with the Peace Corps, Dining for Women supported a four-day, province-wide girls' soccer camp. The goal was to empower and educate young women through the use of soccer. The camp provided a safe space for girls to play sports, learn how to take care of their mental, physical, and sexual health, and engage in girls' empowerment activities.

Our UNICEF Partnership



Some of the most vulnerable and forgotten groups in our world today are refugees and internally displaced persons. The size of these vulnerable populations makes this the largest humanitarian crisis of our time. In 2017, Dining for Women partnered with UNICEF USA to address the urgent needs of Syrian refugee women and girls in Jordan and internally displaced women and girls in South Sudan.

The Jordan and South Sudan projects are unique for Dining for Women. While we cannot fund projects in conflict areas such as South Sudan, our partnership with UNICEF allows us to do so because UNICEF is a proven leader in delivering life-saving assistance and life-sustaining programs in conflict-prone areas and during emergencies. With the Jordan project, we have a unique cost-sharing agreement with

UNICEF Next Generation, a group of young philanthropists who have also pledged \$100,000. By leveraging funds from other funders, we can make our dollars and our impact go even further.

Jordan Project

Sustained conflict and violence in Syria has led to an influx of 650,000 refugees to Jordan refugee camps and settlements and other locations at the Jordan-Syria border. Many Syrian refugee mothers and their infants lack access to appropriate maternal and newborn health care. In addition, women in particular do not have access to employment that would allow them to secure basic necessities for their families.

Syria is the biggest humanitarian and refugee crisis of our time, a continuing cause of suffering for millions which should be garnering a groundswell of support around the world.



Filippo Grandi, United Nations
High Commissioner for Refugees

Source: The UN Refugee Agency 





This partnership will empower Syrian refugee women—providing them with opportunities to participate in the workforce and make a meaningful difference in the lives of vulnerable mothers and their newborns.



UNICEF USA

Source: UNICEF USA 

Dining for Women awarded UNICEF USA a \$100,000 Partnership Grant to:

- Provide safe and lawful employment opportunities for Syrian refugee women so that they do not have to resort to exploitative and high-risk jobs.
- Address the need for maternal and newborn health care services for new mothers and their infants.

With this project, UNICEF identifies vulnerable women within the refugee camps and host communities and trains them to produce lifesaving newborn kits. These kits contain vital items for both the mothers and babies such as clothing, cots, diapers, baby blankets, and hygiene items. The women receive monthly payments in line with national standards and regulations. The newborn kits are distributed to promote maternal and child health care in conjunction with prenatal and postnatal counseling visits.

WOMEN AND GIRLS IN HUMANITARIAN CRISES

It is well-documented that women and girls are more vulnerable and suffer the most during humanitarian crises. The following are some of the impacts on women and girls during conflict or crisis:



A significant increase in female-headed households, and these are often the most impoverished.



Limited access to health care: 60% of preventable maternal deaths take place in settings of conflict, displacement, and natural disasters.



An increase in all forms of violence against women: in some crisis settings, more than 70 percent of women have experienced gender-based violence, including rape and early and forced marriage.



Girls are 2.5 times more likely to be out of school in conflict-affected countries than their counterparts in conflict-free countries.



Crises often hit women's livelihoods the hardest, increasing their risk of engaging in poorly paid work or transactional sex.



Increased care-related tasks for women, such as providing food and water and caring for the sick.

Source: UN Women 

South Sudan Project

South Sudan's independence in 2011 occurred after more than two decades of near continuous war. The new republic continues to face internal conflict and famine. More than two million people have been displaced by violence in South Sudan, 87 percent of whom are women and children. Gender-based violence (GBV) is an urgent issue, with high levels of sexual violence prevalent throughout the country.

Dining for Women pledged to raise \$100,000 in 2018 for:

- *GBV mitigation* | Ensuring sufficient lighting and security patrols at displacement camps and protective patrols to help women who go outside the camps to search for firewood.
- *Psychosocial support* | To help girls overcome difficult experiences such as rape, sexual abuse, and other forms of GBV.
- *Awareness campaigns* | Engaging communities in a process to explore, debate, and ultimately alter norms that influence behaviors, practices, and beliefs that contribute to GBV.
- *Capacity building* | Strengthening national capacity to deliver quality GBV prevention.

This support means that thousands of girls will be given a second chance to grow in stable, nurturing, and protective environments.

As a girl, I'm scared to go out of the camp on my own. If you walk to the market, boys start whistling at you. If you start talking to them, they may leave you in peace. If you don't, they start bullying you. I wish I could go to school and learn. Girls should study as much as boys. In the future, I'd like to be a teacher and teach girls of my age to put school first.



Gisela Joseph

Source: UNICEF South Sudan



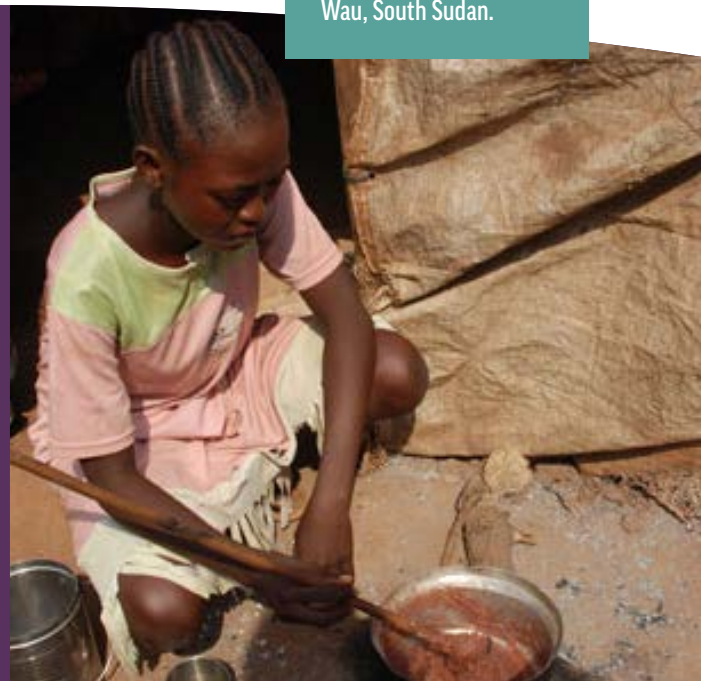
Gender-based violence (GBV) is one of the most critical threats to the protection and wellbeing of women and children in South Sudan. Already rife prior to the conflict, it is now nearing epidemic proportions.



UNICEF South Sudan

Source: UNICEF South Sudan

Gisela Joseph is 16 years old and lives in the UN's protection of civilians camp in the city of Wau, South Sudan.



IMPACT OF OUR 2017 GRANTS & PARTNERSHIPS

The Featured Grants and Partnerships we awarded in 2017 directly impact **70,776 women and girls** and indirectly impact **409,360 family and community members.**



MULTI-YEAR IMPACT OF OUR SUSTAINED GRANTEES

Over the three-year period of the grants, our sustained grantees directly impact **36,798 women and girls** and indirectly impact **118,808 others**, including family and community members.

7,617

Young girls from marginalized communities provided with quality schooling, academic support, leadership training, and opportunities for empowerment.

120

Young vulnerable girls in urban Cambodia offered shelter, support services, vocational training, and reintegration with their families.

500

Women received literacy and financial skills, training and instruction that improved their economic earning capacities while increasing their self-confidence and stature within their families.

53,313

Women and children living in conflict zones were served by community health workers and backpack medics that provided life-saving medications, preventative care, and health services.

5,000

Rural women maintained health savings accounts which increased the timeliness of care, increased preventative care, and supported income-generating activities.

500

Girls and their communities engaged in an early marriage prevention initiative by focusing on education for girls, leadership development, and human rights.

3,150

Young girls engaged in education, awareness, and advocacy to end Female Genital Cutting in The Gambia.

576

People participated in camps and workshops to promote gender equality and initiate behavior changes that empower girls.

OUR ADVOCACY PROGRAM



Advocacy is an important and exciting next step for Dining for Women, as well as a natural extension of our grant making. The most effective nonprofits work to address both the symptoms *and* the root causes of problems. In fact, engaging in advocacy is considered best practice for high-impact nonprofits today.

The power of our Advocacy Program comes from our grassroots network of members. **It is fueled by the collective voices of our passionate and committed members.** By raising awareness and pushing for U.S. policy reform, together we can create systematic, long-term change to improve the lives of women and girls internationally.

Through our Advocacy Program, we ask our members to advocate for policies that align with our mission of empowering women and girls in the developing world and promoting gender equality. The U.S. has tremendous international impact on issues that are critical to Dining for Women's mission through its federal budget and policy. Our advocacy efforts encompass a range of U.S. funding and legislative initiatives—from support for gender equality in the U.S. foreign aid budget, to specific policy areas such as protecting girls' access to education, preventing

violence against women, or advancing women's role in peace and security.

Through grassroots efforts, such as letter writing campaigns, petitions, phone calls, and speaking opportunities, members have the opportunity to influence American foreign policy and funding so that it benefits women and girls in the developing world.

In 2017, our Advocacy Committee focused its efforts on consulting with members about how to implement our Advocacy Program as well as educating members about U.S. foreign aid.

Gender Equality and U.S. Foreign Aid

The U.S. international affairs budget is crucial to providing humanitarian aid and programs that target women and girls. While Dining for Women's grants support small, innovative projects, U.S. government funds, in partnership with other nations and non-government organizations, can amplify innovation on a much larger scale. For example, since 2008, the United States Agency for International Development (USAID) saved at least 4.8 million lives with its maternal and child health programs, and 11.3 million people were impacted by USAID's efforts to fight gender-based violence in 2016.

Yet, the entire international affairs budget, which includes both diplomacy and development, is only about 1 percent of the total U.S. federal budget. And only half of that is poverty-reducing foreign aid.





CA, Castro Valley-1 chapter

Dining for Women has an impressive track record of success with our collective donations. Now, we can have an even greater impact with our collective voices!



Betsy Dunklin, Advocacy Committee Chair and member of ID, Boise-1 chapter

If women across the globe had access to more agricultural resources, they could feed 150 million more people.

Source: Food and Agriculture Organization of the United Nations (2010/2011 report) [↗](#)

Putting Women and Girls at the Core of U.S. Foreign Aid

We know that foreign aid programs that focus on gender equality are the most effective way to end extreme poverty.

Dining for Women joins with many other international, nonpartisan organizations who share this position. There is extensive research on the benefits of investing in women and girls—benefits that extend beyond the individual woman to her family, community, and country. Empowering women and girls and advancing gender equality are a critical part of the **United Nations Sustainable Development Goals (SDGs)**, an internationally agreed upon set of goals to end poverty and advance equality.



UN Sustainable Development Goal (SDG) #5

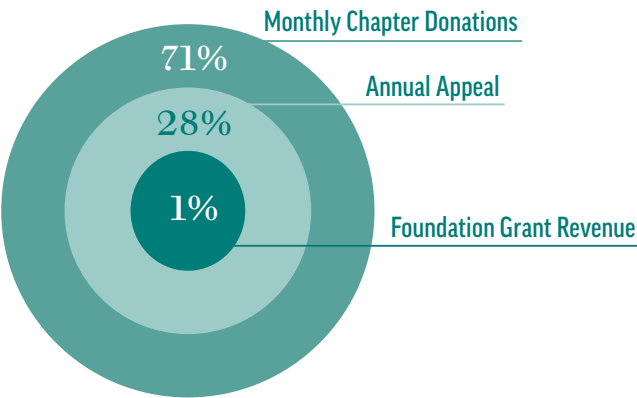
Achieve gender equality and empower all women and girls.

By putting gender equality at the core of all U.S. foreign aid, we can more effectively make our world safer, more peaceful, inclusive, and prosperous for everyone.

Dining for Women will continue to provide our members with the education and the tools to advocate for a strong U.S. foreign aid budget—one that makes gender equality and women's empowerment the centerpiece of foreign aid.

2017 FINANCIAL OVERVIEW

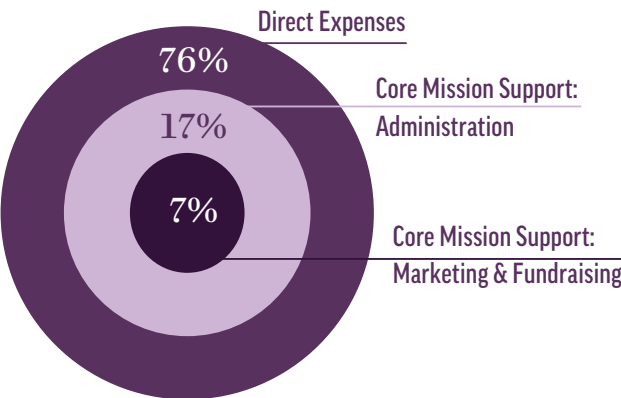
2017 Revenue



Monthly Chapter Donations	\$1,199,206	71%
Annual Appeal	\$478,336	28%
Foundation Grant Revenue ¹	\$16,000	1%
Total Revenue	\$1,693,542	100%

¹ Additional funds from foundations and corporations (listed on page 25) are included in Monthly Chapter Donations and Annual Appeal.

2017 Expenses



Direct Expenses ²	\$1,257,336	76%
Core Mission Support Administrative ³	\$286,622	17%
Core Mission Support Marketing & Fundraising ³	\$117,660	7%
Total Expenses	\$1,661,618	100%

² Direct Expenses are those costs directly related to running our four programs: Grants, Partnerships, Member Education and Engagement, and Advocacy. These expenses include the actual payment of our Featured, Sustained, and Partnership Grants as well as the cost of managing all four of our programs.

³ Core Mission Support is critically important to our operations. Examples include rent, insurance, licensing & permits, financial management, staff training and development, information technology, donor/member management systems, fundraising/marketing materials and services, and donor stewardship.

A NOTE ABOUT CORE MISSION SUPPORT

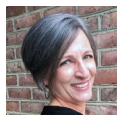
Core Mission Support represents the importance of strong organizational infrastructure to support both our programs and the organization itself. Our four programs are built around and supported by our Core Mission Support.

For Dining for Women to succeed, we need talented, committed staff, combined with current human resources practices, training and development. We need strong, strategic financial and accounting practices. We need capable, responsive board governance. Marketing and fundraising are also important to ensuring our sustainability and growth as an organization. These are all part of Core Mission Support, and we need this solid core at the center of our organization in order to achieve our mission.

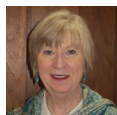
BOARD AND STAFF

As of 12.31.17

BOARD OF DIRECTORS



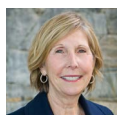
Barb Collins
Co-Founder, Greenville, SC



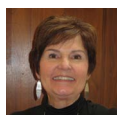
Betsy Dunklin
Boise, ID



Sarah Durry
Atlanta, GA



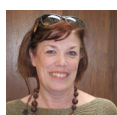
Carol Dillon Kissal
Atlanta, GA



Tara O'Connor LaRose
Plainwell, MI



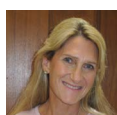
Connie Lewin
Brooklyn, NY



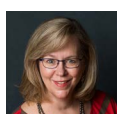
Lynn O'Connell
Alexandria, VA



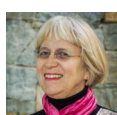
Cynthia Radford
Secretary, Travelers Rest, SC



Caren Senter
Greenville, SC



Susan Stall
Chair, Greenville, SC



Barbara Wagner
Treasurer, Cincinnati, OH



In 2017, Dining for Women Co-Founder **Marsha Wallace** stepped down from the Board. Her vision and commitment created the extraordinary organization that continues to impact the lives of women and girls around the world. Marsha devoted 14 years to leading our organization and we are so grateful for all that she has given.

RETIRED BOARD MEMBERS IN 2017



Susan Garrity



Susan Negrin



Sandy Ward

ADVISORY COMMITTEE MEMBERS

Dianne Calvi
Grants & Partnership
Oversight Committee

Kathy Fitts
Finance Committee

Judy Stober
Finance Committee

OUR STAFF

Justine Allen
Member Engagement
Coordinator

Lena Dunham
Administrative
Coordinator

Wendy Frattolin
Communications and
Membership Director

Beth Ellen Holimon
President

Dr. Veena Khandke
Director of Grants
and Partnerships

Gina League
Director of
Administration

Harriet Ligon
Accounting and
Data Associate

Leslie Mason
Accounting
Specialist

Amy West Moore
Technology
Coordinator

OUR VOLUNTEER LEADERS

As of 12.31.17

REGIONAL LEADERS

Kay Manley Carolinas	Peggy Smith Mid-Atlantic	Corinne Blakemore Central
Merle Steiner Mid-Atlantic	Susan Prener Northeast	Kathy Williams Northeast
Kathleen Jaworski Northwest	Karen McCune Northwest	Betty Purkey-Huck Rocky Mountain
Terri Abraham Southeast	Tammy Frazier Southwest	Lisa Kerley Southwest
Sybbie Fox Texokana	Linda Dougall West	Patty Karabatsos West

Retired in 2017:

Ruth Bates	Leslye Heilig
Helen Borland	Mary Liz Jones
Leslie Galup	Abbie Sladick
Barbara Harris	Susan Tocher

OUR PANEL OF EXPERTS

Tara Abrahams

Executive Director of *The Girl Project* at Glamour Magazine

Dr. Angela Eikenberry

David C. Scott Diamond Alumni Professor of Public Affairs
School of Public Administration, University of Nebraska at Omaha
Author of *Giving Circles: Philanthropy, Voluntary
Association, Democracy*

Ambassador Steven E. Steiner

Gender Advisor for the U.S. Institute of Peace

GRANT SELECTION COMMITTEE

Lynn O'Connell, Chair	Harriet Dichter
Jada Anderson	Kathy Duffield
Debra Baulduff	Cindy Dyballa
Janine Baumgartner	Stephanie Kelly
Linda Baxter	Sandy Lease
Brighid Blake	Sue Malick
Corinne Blakemore	Clare O'Brien
Lynn Broadbent	Karen O'Brien
Cathy Caldwell	Elizabeth Scott Osborne
Lindy Cater	

GRANT SCREENING AND REPORTS

Elizabeth Anderson	Megan Pomphrey
Jessica Fowler	

ADVOCACY COMMITTEE

Betsy Dunklin, Chair	Nancy Jacobson
Cathy Caldwell	Susan Whaley
Jim Hennigan	

DIVERSITY AND INCLUSION COMMITTEE

Denise Woods, Chair	Rizwana Khader
Brenda Allen	Melesa Lighty
Barbara Chatzkel	Kathy Shearer
Cathy Hammoud	Leah Victorino

EDUCATION TEAM

Deborah Fiske	Kathy Williams
Linda McElroy	Chris Worthy
Marie Narlock	

SOCIAL MEDIA CURATOR

Stephanie Sawyer

MENTORS

CAROLINAS

Julia Edelson
Susan Fernbach
Flora Helmstetter
Shashi Khanna
Alison Lively
Marnie Walsh

CENTRAL

Diane Bray
Vicki Granger
Mary Toneff
Kim Whetstone
Karen Whitney

ROCKY MOUNTAIN

Thora Pabst

MID-ATLANTIC

Dianne Blais
Elaine Butterfoss
Judy Christensen
Peggy Fitzgerald Bare
Sylvia Gentry
Colleen McClain
Rosemary McGee
Sylvie Meyers
Susan Richards

SOUTHEAST

Linda Bodine

NORTHWEST

Judy Bacon
Karen Faunt
Lynn Kellogg
Linda McElroy
Tami Savage

NORTHEAST

Ruth Bates
Leslye Heilig
Heather Hornik
Michele Krieg Bauer
Barbara Myers
Barbara Quine-Moran
Susan Sinatra

WEST

Mary Force
Lisa Krigsman
Cheri Lippman
Monika McQuarrie
Cynthia Sawtell
Mary Sweeney
Peggy Welik



10-YEAR CHAPTERS

CA, San Francisco – 2

Led by Bri Kapellas, Chris King

CA, Santa Cruz – 1

Led by Lisa Krigsman,
Susan Brodsky

IL, La Grange Park – 1

Led by Barbara Harris

IL, Springfield – 1

Led by Anne Capestrain,
Willa Pelkey

MD, Rockville – 1

Led by Peggy Fitzgerald Bare,
Merle Steiner

MI, Dearborn Heights – 1

Led by Sherri Jessup

MI, Grand Rapids – 1

Led by Jill Peirce, Joan DeVries

MO, Saint Louis – 1

Led by Cathy Edmond

NC, Greensboro – 5

Led by Shashi Khanna, Hollis Gabriel

NJ, Roseland – 1

Led by Rhonda Graber, Dianna Linnett

NY, Ithaca – 1

Led by Judith Ashton, Karen Baum,
Karin Suskin, Susie Rakow

OH, Cincinnati – 2

Led by Karen Whitney

OH, Sylvania – 1

Led by Mary Toneff

PA, Ephrata – 1

Led by Karen Malleus, Daila Boufford

SC, Greenville – 1

Led by Connie Williamson, Cindy Henry

VA, Herndon – 1

Led by Sheila Hanz

VA, Onancock – 1

Led by Kitty Croke, Wendy Miles,
Shannon Gordon

2017 FOUNDERS' CIRCLE

CATALYSTS

\$50,000+

Tara O'Connor LaRose

VISIONARIES

\$25,000+

Anne Capestrain
Capestrain-Tracy
Family Fund

INNOVATORS

\$10,000+

Corinne Blakemore
Linda Byars
Karen Rowley
Susan & Russell Stall
Elizabeth Wagoner

INVESTORS

\$5,000+

Anonymous
Ellen Browne, In Memorium
Betsy Dunklin &
Charles Cole
Gelene Ellsworth
In Memorium, Reader
Mood McClary Foundation
Jennifer Hammer
Darcy Hitchcock &
Dale Graham
Marilyn & Stephen Kohler
Susan Negrin
Trudi Sommerfield
Connie Williamson

ADVOCATES

\$2,500+

Francine Fleming
Jane Gennrich
Sandy Lease & David Hugg
Renee Losh
Marie Narlock
Barbara Wagner

SUSTAINERS

\$1,000+

Anonymous (x3)
Angie Acakpo-Satchivi
Bobbie Aitchison
Lynne Anderson
Shereen Arent
Anne Arjani
Jeannette Artini
Jody Baden
Deborah Baker
(Portola Valley, CA)
Ruth Bates
Wilma Bates
Nancy Benardete, New York
Community Trust
Alice Bentley
Whitney Bischoff
Maryann Boehmke
Claudia Bonilla
Helen Borland, Joseph W.
Kiskel Charitable Fund
Annette Bowers
Julia Brugliera
Nancye Buelow
Gail Burchard
Elaine Butterfoss
Stacey Cameron
Gail Caulkins
Marie Cecil
Sherry Centanni
Barb & Greg Collins
Anne Conlan
Christel Cothran
Cathryn Cox
Robyn Crane
Ginger Creevy
Ellen Deixler
Harriet Dichter
Linda Dougall
Laura Eckhardt
Karen Faunt
Sue Fernbach, Fernbach
Rishebarger Fund of the
Community Foundation
of Western North
Carolina Inc.
Natalie Ferreira
Jo Fintel
Marlane Forsberg
Tammy Frazier
Suzanne Frye
Monica Galloway
Wanda Ginner
Rhonda Graber
Diana R Greene,
Wildflower Boutique
Jenn Gudebski
Sherry Haefele
Nancy Hahne Kent
Janet Hatmaker
Abby Himmelein
Cheryl Holland
Gayle Horn
Tiki Hubbard
Colette Ireland
Alissa Johnson
Sumi Jones
Inez Kalin
Judith Kampfner
Natha Katz
Susan Kepner (IL)
Chris King
Carol Dillon Kissal
Laurie Kobor
Pamela Lane
Blandine Leavitt
Lee Lindsey
Susan Lovell
Kara Manza
Peggy McCaffrey
Maureen McCloskey
Karen McCune
Laura Meister
Birgit Meyer
Joan Monts
Revae Moran
Carol Mertz Nakashima
Peggy Newell
Lynn O'Connell
Stephanie Perrett
Carla Peterson
Anna Pujol
Cynthia Radford
Susan & Don Ray
Susan Rector
Margaret Roberts
Francine Roy
Ruth Russell
Shannon Santee
Tami Savage
Cynthia Sawtell

Pat Scheid, The William and
Flora Hewlett Foundation
Susan & Edmund Schenck
Maryanne Schiller
Jean Schmidt
Zelda Schwebel, Miami
Foundation
Laurel Seidelman
Neeti Sharma
Donna Shaver
Kathleen Shearer
Joyce Shields
Bruce Anne Shook
Brenda Skelly
Abbie Sladick
Diane Smock
Jody Spraker Pozen
Merle Steiner
Bill Stephenson
Jill Stoliker
Margaret Tabar
Tod Tappert
Sherry Taylor
Ryan Tennis
Susan Thomas (VA)
Lee Tracy
Nancy Truluck
Linda Twomey
Jackie Verity, Ayco
Charitable Foundation
Laurie & Brad Vroom
Jennifer Walker
Sandy Ward
Karen Whitney
Rhonda Willies, Willies
Family Foundation
Fran Wolff

CORPORATIONS, FOUNDATIONS, AND ORGANIZATIONS

\$10,000+

Journey Charitable Foundation
Trade Fair Marketplace

\$5,000+

Centers for Spiritual Living
(Golden, CO)

\$2,500+

Woven Nonprofit Organization

\$1,000+

Networking Entrepreneurial
Women of Marin

\$500+

Amazon Smile
LPL Financial
Renaissance Charitable Foundation
Ten Thousand Villages Akron, OH
Woman's Society First
Congregational Church of
Western Springs

UP TO \$499

Agnus Dei Lutheran Church
Alpha Delta Kappa
America's Charities
Atlanta Womans Club
BNCL LLC
Butler Tillman Express Trucking
Camelback Safaris
Center for Spiritual Living,
Westlake Village
Cinnabon Carval
Community Tap
Fidelity Brokerage Services LLC
Flower Essence Energy
Gifts that Give Hope

Hoffman Travel
Oil & Vinegar Store
The Omnology Group
Padua Academy
Quartz Hill Woman's Club
Spice of Africa LLC
Squaw Peak Circle
St Jude's Episcopal Church
Steele Dentistry
Synergy
Ten Thousand Villages
Atlanta, GA
Ten Thousand Villages
Fort Collins, CO
Ten Thousand Villages
Greensboro, NC
Tomabe Inc.
The Woman's Club of Albany, Inc.
Woman's Club of Hilton Village
Yoga for You by Holly LLC

IN-KIND DONORS

Greenleaf Consulting International
Microsoft
Nelson Mullins
Paper Airplanes LLC
Quality Business Solutions
Salesforce Foundation
Yella Soft

MATCHING GIFTS

Accenture LLP
Adobe Systems, Inc.
Aetna Foundation
Amgen Foundation
AT&T Employee Giving Campaign
Avago Technologies
Gift Matching Program
B D Associate
Matching Gifts Program
Benevity Inc.
Charles Schwab Foundation



Chevron Matching Employee Funds
Conoco Phillips Company
Deutsche Bank
Americas Foundation
GE Foundation
Glaxo Smith Kline
Google Inc.
Hewlett Packard Company Match
IBM Employee Services
Members Give
Powered by Justgive
Merck Foundation
Microsoft Matching Gifts Program
Pacific Gas & Electric
Qualcomm Charitable Foundation
Shell Oil Company Matching Gifts
TCF Foundation
UnitedHealth Group
Workday Inc.

CAUSE MARKETING PARTNERS

Anchal Project
BeadforLife
Betsy Teutsch
Child's Cup Full / Darzah
Friendship Bridge
TisBest Philanthropy
Women's Peace Collection

Dining for Women is a participant
in the Amazon Services LLC
Associates Program and receives
5-10% of purchases made through
this designated link:

► **DFW AMAZON**

DONORS



DONORS \$750 - 999

Linda Andrews
Judy Bacon
Nanci Ann Banninger
Memory Blodgett
Darlene Braunschneider
Donna Cowden
Mary Cullen
Eileen Donnelly
Dianne Dryer
Cindy Dyballa
Jerrie Earthman
Margaret Fitzgerald Bare
Linda Frederick
Susan Goldby
Cari Gradison
Kay Halsey
Sheila Hanz
Martha Harnly
Bonnie Hay
Anne-Reneé Heningburg
Janet Herron
Marie Johantgen
Lisa Keamy
Kelly Keate
Lisa Kerley
Christy Lamb
Laura Layson
Victoria Lustbader
Anita Martinez
Barbara Merrell
Andrea Michaels
Deborah Monaco
Jacqueline Morrill
Jo Prostko
Betty Purkey-Huck
Eve Rabbiner
Lucille Steenbergen
Carolyn Strother
Gracey Vaughn | National Christian
Foundation of Raleigh
Leonie Walker
Cathryn Wasson
Cheryl Zaccaro
Marti Zontek

DONORS \$500 - 749

Anonymous
Marty Abbott
Terri Abraham
Karen Abrams
Eileen Aebi
Judie Allen
Karen Allen
Maryellen Alviti
Mary Amdahl
Wendy Anderson
Kathleen Attwood
Nancy Ault
Jane Avni
Vicki Baldwin
Kendra Bartley
Randy Barto
Sally Batz
Janine Baumgartner
Linda Baxter
Mary Beaumont
Christine Belmont
Catherine Bennington Jenrette
Ellen Benson
Kathy Benya
Recha Bergstrom
Joni Berinstein
Sylvia Betts
Zdenka Bleile
Marlies Block
Linda Bodine
Hinda Bodinger
Dale Boercker
Robin Boston
Cheryl Boyd
Deborah Britt
Barbara Brook
Mary Brower
Joann Brown
Yasamin Brown
Saundra Bryn
Trish Buzan
Ranie Cahill
Cathy Caldwell
Cindy Campbell (FL)

Cynthia Campbell (CA)
Judi Caron
Cynthia Carpenter
Carolyn Casey
Meg Castro
Lindy Cater
Mary Louise Chesley Cora
Carol Chillemi
Margaret Clark
Maureen Clark
Cari Class
Karen Cokely
Nancy Columbia
Barbara Conti
Paul Conway
Connie Cooper
Becky Cordes
Carol Courville
Judi Crane
Sue Dagenais
Elaine Daly
Sharon Dameron
Chris Daniels
Ursula Daniels
Lue Daughenbaugh
Suzana De Camargo
Edna Devore
Betsy Dewey
Rita Dickinson
Ellen Didier
Jane Divinski
Erin Doherty-Ratay
Moirá Donoghue
Polly Dunn
Sheila Dunn
Anna Eddy
Kathleen Edmunds
Kandi Ehrhart
Bonnie & Mike Emerson
Eileen Emerson
Angie Esteve
Diane Evans
Jo Faddis
Gretje Ferguson
Thayer Fleming
Laurie Flesher



Laurie Flynn
 Frances Foley
 Mary Force
 Barbara Ford
 Janice Franz
 Patty Frommell
 Renee Fullem
 Kristin Galloway
 Sue Garcia
 Susan Garrity
 Christine Garst
 Dana Gates
 Susan Gellman
 Laurie Gentry
 Erin Gibbons
 Sharon Gidumal
 Polly Gilbert
 Judith Ginsberg
 Shirley Ginzburg
 Kathy Goltz
 Sandra Gravitt
 Gayle Gray
 Barbara Green
 Carole Green
 Laurie Gregory
 Mary Grether
 Rhonda Grissom
 Barbara Griswold
 Mary Halcomb
 Melissa Hansen
 Rebekah Harris
 Linda Hazelton
 Annette Hearing
 Patricia Hearron
 Peg Heetmann
 Florae Helmstetter
 Cindy Henry
 Julia Hill
 Beth Ellen Holimon
 Christy Holimon
 Louise Holt
 Meghan Hoobler
 Jackie Hoofring
 Heather Hornik
 Joann Horton
 Joanne Houghton

Michelle Howell
 Colleen Hyslop
 Marcia Iole
 Erin Jacobson
 Nicole Jakaby
 Kathleen Jensen
 Judi Jessen
 Kara Johns Tennis
 Lori Troutt Johnson
 Lynda Johnson
 Mary Liz Jones
 Mary Kane
 Shannon Kapek
 Patty Karabatsos
 Linda Karmen
 Julie Kassan
 Helen Keane
 Mary Jane Kelemen
 Shashi Khanna
 Janice Kilburn
 Colleen Kill
 Cathy Kim
 Nancy Kincaid
 Julie Klapner
 Cindy Knul
 Michele Krieg Bauer
 Kirsten Kristensen
 Devra Kudeviz
 Denette Kuhlman
 Deborah Kutenplon
 Jane LaClergue
 Julie Lambert
 Cathy Lampman
 Penny Ledbetter
 Patti Lee
 Marie Leslie
 Steven Levine
 Christina Lindstrom
 Nancy Lofaro
 Gloria Loredo
 Sandra & Michael Lorion
 Nancy Lorr
 Jenny Loustau
 Marsha Low
 Jean Lowe
 Pam Lund

Gypsy Lyle
 Marlene Macfarlane
 Jane Mairose
 Lori & Frank Maitski
 Sue Malick
 Ruthann Manders
 Chris Manion
 Ruthann Marquis
 Maurci Martin
 Marcy Massengale
 Joan Mateker
 Karen Mathers
 Annette McDermott
 Linda McElroy
 Rosemary McGee
 Mary Lou McGinnis
 Shirley McGreal
 Sherril McKeown
 Patti McNay
 Colleen McQueen
 Vicki Megginson
 Sylvie Meyers
 Ketty Miller
 Marlene Mirassou
 Mary Caroline Mitchell
 Wendy Moonan
 Janice Morgan
 Janean Morris
 Caroline Morse
 Helen Moynihan
 Bonnie Mueller
 Karen Munoz
 Judy Nardacci
 Tammy Niemann
 Casey Novak
 Mary Oakley
 Cindy & Gary Oberman
 Nora O'Connor Wade
 Nancy O'Hara
 Jennifer O'Neil
 Patricia O'Neil
 Carol Ozier
 Sharon Padilla
 Nora Paller
 Margaret E Paylor
 Ellin Payne



Patricia Payne
 Anna Pearson
 Jill Peirce
 Joy Pendergrass
 Ann Pendleton
 Louise Persson
 Karen Pesch
 Ellen Peters
 Tamara Peterson
 Laura Phail
 Wilma Eileen Pletsch
 Paula Porter
 Claire Reade
 Donna Reyburn
 Wendy Ringhiser
 Tracy Ritter
 Johanne & David Roberts
 Kim Roberts
 Ann Robinson (CA)
 Catherine Rogers
 Mona Roussey
 Walta Ruff
 Bobbie Ruh
 Marjorie Safran
 Jana Sanford
 Ann Sartwell
 Lois Schaper
 Linda Schneckenberg
 Nancy Schoenberg
 Barbara & Gregory Schroeder
 Connie Schroeder
 Cathy Schultz
 Christine Schwartz
 Susan Sciaraffa
 Sue Scollo
 Heather Scott
 Christine Sederstrom
 Caren Senter
 Claudia Serpa
 Lena Shealyno'sun
 Barbara Shelton
 Sally Sheridan
 Joyce Silberman
 Jodi Slankard

Mary H Smith
 Susan Sogard
 Kristin Spear
 Theresa Spear
 Patti Spezzaferro
 Mary Spitzer
 Suzanne Spitzer | Spitzer Family
 Foundation of SEI Giving Fund
 Mary Sproat
 Prudy Squier
 Susan Stamerjohn
 Emelia Stephenson
 Carolyn Stevenson
 Vicki Stillman-Toomey
 Della Stolsworth
 Laurie Stroope
 Pam Suess
 Connie Sullivan
 Nancy Sullivan
 Kathleen Svabek
 Mary Sweeney
 Nancy Takaichi
 Betsy Teutsch
 Camille Thomas
 Duane Thompson
 Deborah Tilley
 Rita Tolvanen
 Susan Tom
 Wanda Tracy
 Sarasina Tuchen
 Marybeth Tyler
 Leslie Valentine
 Jane & Michiel
 Van Schaardenburg
 Victoria Vasques
 Anita Vieira
 Nancy Vincent
 Linda Wagner
 Nancy Walden
 Kira Walker
 Libby Walker
 Marnie Walsh
 Page Walter
 Paula Warren

[Click here for a complete
list of 2017 donors.](#)

VIEW 2017 DONOR LIST

Cynthia Warshaw
 Malvina Wasserman
 Denise Weiner
 Eleanor Welling | Community
 Foundation of Greenville
 Dorene West
 Sherri West
 Kim Whetstone
 Carolyn Wier
 Linda Wilcox
 Dianne Willard
 Ann Williams (PA)
 Posy Williams
 Ellie Wilson
 Michele Winer
 Pamela Winkler | Hale Winkler
 Fund of the Community
 Foundation of Western
 North Carolina
 Judy Winslow
 Karyl Woldum
 Gail Woolaway
 Kelly Wyatt
 Priscilla Zambor



EAT. LEARN. CHANGE THE WORLD.

Have a rewarding and fun experience
with your friends and help end extreme
poverty for women and girls worldwide.
[Join Dining for Women.](#)

[DININGFORWOMEN.ORG/JOIN-US](https://diningforwomen.org/join-us)



P.O. Box 25633
Greenville, SC 29616

864.335.8401

diningforwomen.org

info@diningforwomen.org

