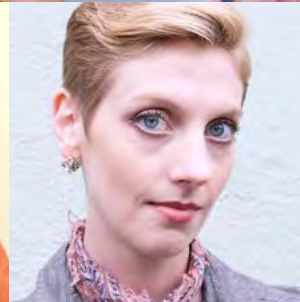


 Dining
for
Women

2019 ANNUAL REPORT



I am Dining for Women, Hear me ROAR*

I am a mother, father, grandmother, grandfather, wife, husband, partner, spouse, aunt, uncle, daughter, son, BFF

I am a she, he, and they

I am from the global north, I am from the global south, I am straight, I am queer, with skin colors in every hue

I am employed, unemployed, underemployed, retired, volunteer, student, scholar

I am a farmer and livestock owner, an educator, a professional, a small business entrepreneur

I am a landowner, landless, I am a nomad

I am a community health worker, a doctor, a nurse, a pharmacist

I am on the frontlines, a firefighter, an EMT, the law, and a service provider

I need water, food security, and a roof over my head

I need family and community

I want equal opportunity, I want fairness, I want equal access

I want an education, I want healthcare, I want a future

I want music, dance, and opportunities to create

I want Mother Earth to sing with joy, with her abundant flora and fauna

I want justice, I want equality, I want peace

I want good governance, responsibility, and accountability

I will give of my time, my compassion, and my resources

I will give of my talent and hard work

I will speak, I will speak up

I will communicate, discuss, and share

I will join the other chorus of voices

I will never stop trying

I am willing to go where others have not gone before

I am Dining for Women, Hear me ROAR

*Inspired by the 1971 song "I Am Woman" by Helen Reddy

By Dr. Veena Khandke
DFW Director of Grants
& Partnerships

Member since 2011
SC, Greenville-1 chapter

Leadership Message

In recent years, Dining for Women (DFW) has put in place programs and systems that would allow us to grow our membership in order to expand our impact on global gender equality. 2019 was the year that these efforts bore fruit.

Thanks to the work of our volunteer leaders and staff, we welcomed many new DFW chapters across the U.S. We ended 2019 just shy of 500 chapters, but quickly surpassed this historic milestone early in 2020.

With increased funds resulting from new chapters and more monthly recurring donors, we expanded our Sustained Grants from nine to 12 and increased grant size from \$60,000 to \$75,000. **Our Sustained Grants allow us to really partner with our grantees, creating deeper connections and greater impact.**

We are continually enhancing our member education and opportunities with new ways for our members to engage with our mission and each other. In 2019, we expanded the educational resources on our Sustained Grants; our travel program flourished with members visiting grantees in Kenya, Bhutan, and Peru (see p. 17); and our Advocacy Committee explored a partnership with [RESULTS](#), a non-profit organization with 40 years of experience advocating to end poverty around the world (see p. 19).

A number of initiatives raised DFW's profile within the global gender equality arena, including our collaborative International Women's Day event (see p. 9), and our participation in the UN Commission on the Status of Women and the UNICEF USA Annual Summit. We

fulfilled a long-held goal to send representatives to Women Deliver, the world's largest conference on gender equality with more than 8,000 advocates from 165 countries (see p. 6).

All of this has positioned us well for the next chapter of DFW. 2019 was a year of consultation, collaboration, and planning as our board developed a new, multi-year strategic plan based on input we received from members, donors, volunteer leaders, grantees, and others.

As we planned for the future in 2019, we could not have anticipated how our world would be turned upside down in early 2020 by the COVID-19 pandemic. Throughout 2020, we have watched in horror as the number of cases and deaths rose around the world, and we moved quickly to transition our organization to this new environment – moving to virtual chapter meetings and giving our grantees flexibility to address their most urgent needs.

In any crisis, women and girls are impacted the most. COVID-19 is jeopardizing the limited progress made by women and girls globally and may reverse many gains in gender equality (see p. 5).

The circumstances of 2020 make DFW's community building and grant making more valuable with each passing day! Many challenges remain, but we are confident that our board, staff, volunteers, and members will continue to rise to the situation and ensure that safety and equality for women and girls are treated as the vital concern that they are.

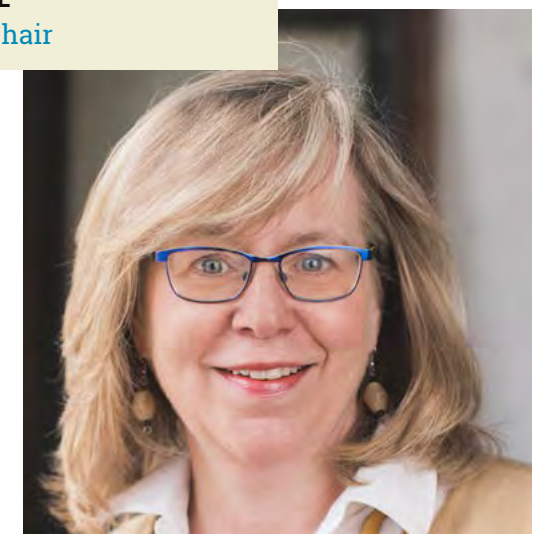
Beth Ellen Holimon

BETH ELLEN HOLIMON
CEO and President



Susan Stall

SUSAN STALL
2019 Board Chair



Global Gender Equality: Where Do We Stand?

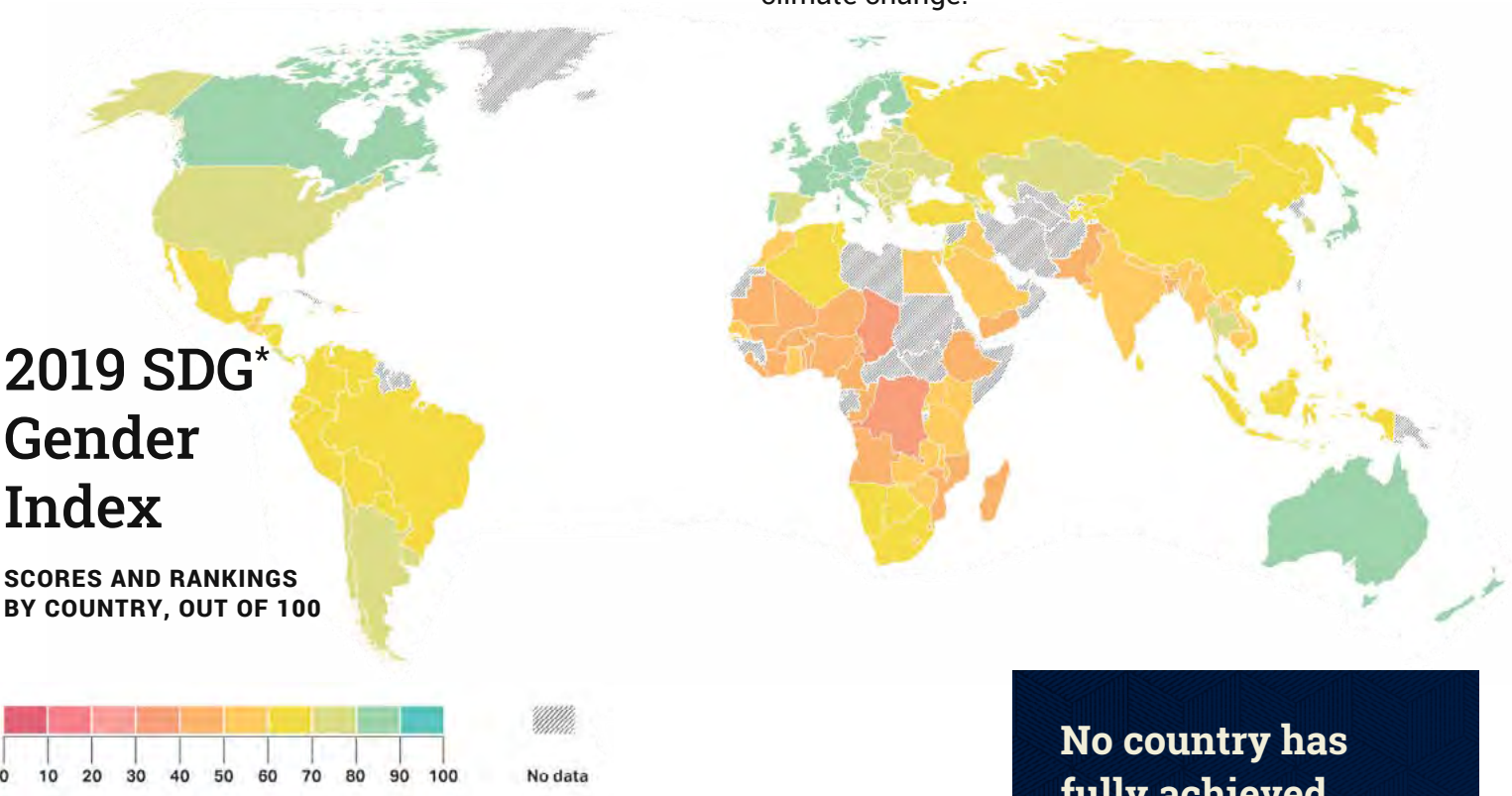
Global gender equality is Dining for Women’s guiding star. **We champion gender equality because women’s rights are human rights.** We believe that every person deserves the same opportunities to thrive, regardless of gender, race, wealth, or where they happen to be born. When women and girls are treated equally, the world is healthier, safer, more peaceful, inclusive, and economically just for everyone.

Yet, all over the world, inequality, oppression, and exploitation continue to hold women back. And we know that oppression of women and girls is bound with other types of injustice based on race, class, and ethnicity. Across the global south, millions of Black and Brown women live in extreme poverty and without access to personal freedoms or opportunities to reach their full potential. Research released in 2019 highlighted these challenges, as outlined below.

None of us will see gender equality in our lifetimes.

This is a sobering statement. It was also one of the headlines in late 2019 when the World Economic Forum released its latest [Global Gender Gap Report](#). According to the report, **it will take 99.5 years – more than a lifetime – for women and men to reach parity across health, education, work, and politics.**

The [2019 SDG Gender Index](#), released by Equal Measures 2030, finds that nearly 40% of the world’s women and girls – 1.4 billion – live in countries “failing on gender equality.” Another 1.4 billion live in countries that “barely pass.” Even the countries that scored the highest have “more to do,” especially in areas such as gender-based violence, gender pay gaps, and climate change.



* Sustainable Development Goals

Source: Equal Measures 2030, 2019

No country has fully achieved gender equality.

According to the report, gender inequality is compounded by other factors. **Girls and women around the world, especially millions of Black and Brown women, experience additional disadvantages on the basis of race, ethnicity, religion, age, income, geographic location, sexual orientation and gender identity, and disability.**

Yet another 2019 report—[The Gender Snapshot 2019](#)—finds that:



More women than men live in extreme poverty, especially during their peak childbearing years.

15M

15 million girls of primary-school age will likely never learn to read and write, compared to about 10 million boys.

1 IN 3

1 in 3 girls aged 15 to 19 have been subjected to female genital mutilation/cutting (FGM/C) in the 30 countries where the practice is concentrated.



38.7% of employed women work in agriculture, forestry, and fisheries, but only 13.8% of landholders are women.

Want to see how different countries scored on the 2019 SDG Gender Index?

SEE THE COMPLETE LIST OF 129 COUNTRIES ON PAGE 12

VIEW LIST



Unequal power relations in households make women more vulnerable than men to food insecurity.

300K

Nearly 300,000 women died from complications related to pregnancy and childbirth in 2017.

1 IN 4

Worldwide, only 1 in 4 parliamentary seats are held by women.

[Progress on the Sustainable Development Goals: The Gender Snapshot 2019](#) >
UN Women & the UN Department of Economic and Social Affairs

This report further states that “While some indicators of gender equality are showing progress, such as the significant decline in the prevalence of FGM and early marriage, **the numbers overall continue to be alarming.**”

Despite the fact that a gender equal world is healthier, wealthier, more prosperous, and more peaceful, we still have a long way to go!

That is why global gender equality is DFW’s guiding star.

The Impact of COVID-19

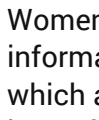
It's been called the "perfect storm" of risk factors for women, and the "shadow pandemic." With the spread of the COVID-19 pandemic in early 2020, even the limited progress made towards gender equality is now at risk of being rolled back.

"Across every sphere, from health to the economy, security to social protection, the impacts of COVID-19 are exacerbated for women and girls simply by virtue of their sex."¹

¹The Impact of COVID-19 on Women



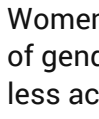
Women are the first to feel the impact of food insecurity.



Women are more likely to be employed in informal activities, such as market selling, which are disrupted in a crisis, leading to loss of income and increased poverty.



Women and girls have increased caregiving responsibilities which exposes them to greater health risks.



Women and girls are at an increased risk of gender-based violence and will have less access to services and support.



Women's access to safe family planning services is likely to worsen, with global contraceptive supply shortages.



©UNICEF/UN0235257/LeMoyne

Even after the pandemic has been contained, women and girls will be impacted for years to come.

Now, more than ever, women and girls need our support.

Dining for Women's work is more important than ever!

DFW on the World Stage



8,000 Gender Equality Advocates

The Women Deliver 2019 Conference was one step on the march towards a more gender equal world, and Dining for Women was proud to be a part of it. More than 8,000 people – including heads of states, ministers, parliamentarians, academics, advocates, activists and journalists – attended from over 165 countries, making this the largest conference on gender equality and the health, rights and well-being

of girls and women. More than 100,000 people also participated virtually.

DFW co-founder Barb Collins, staff members Wendy Frattolin and Justine Allen, and volunteer Regional Leaders Karen McCune (Northwest Region), Pat Payne (West Region), and Colleen Kill (West Region) attended on behalf of DFW.



"I came away proud of the grassroots, community-based work we are doing at Dining for Women and more committed than ever to our mission and vision."

— KAREN MCCUNE

"This conference brought home to me how each of us needs to use her individual power to effect change for women and girls in our community, within our country, and around the world."

— COLLEEN KILL

"When women's organizations find common ground in the fight for gender equality and join hands, the community of women becomes more powerful and effective as change-makers."

— PAT PAYNE



UN Commission on the Status of Women

DFW was once again well-represented at the UN Commission on the Status of Women (CSW63) – the world's principal intergovernmental body dedicated to the promotion of gender equality and the empowerment of women. We co-hosted a panel discussion with UNICEF USA and several DFW grantees, and participated in another panel sponsored by UNICEF USA and Zonta International.

What Our Members Say About DFW

Dining for Women has a strong culture of collaboration, and we value the input of all our members and donors. In 2019, we conducted a membership survey to gather information that will be valuable to us in implementing our next strategic plan. Findings will help us develop programming and initiatives in line with our members' interests and needs, and will provide important demographic information on our membership. Increasing diversity in our membership is important to DFW and will be a key focus area moving forward. Our 2019 member survey will provide us with a baseline for measuring our progress over time.

Thank you to the 2,518 members who completed the survey—a response rate of more than 20%. The following are some of the key findings.



CA, Castro Valley-1 chapter

DFW provides an easy, approachable way to make a difference in the world.

For the amount of impact and satisfaction members get, DFW's low barrier to entry (i.e. no minimum donation required) is especially valued.

"I think the biggest opportunity is that it's a really easy, fun way to do good. It's an enjoyable thing and then you feel like you've had this huge impact. I think that's a huge opportunity to highlight that it is fun and easy to make this tremendous impact in people's lives."

Members enjoy the community they gain in their chapters. Connectedness keeps them involved.

81% of members rank "personal connections with my chapter" as an "important" or "extremely important" factor in deciding to join or get more involved in DFW. Nearly 80% of members said that DFW "made me feel part of a community of caring people."

"What I value most is the community of women who are interested in helping others and learning about and impacting the global community in a positive way. I would say it's the thing that keeps me coming back."

Members are proud and confident of the organization's impact.

96% of members are "satisfied" or "very satisfied" that DFW's grantees are professionally screened and vetted and provide a high level of impact.

"I appreciate the incredible amount of due diligence that goes into selecting quality grantees. It's not just some organization in the US going into Ghana telling them what to do. It's all local-led."



CO, Denver-5 chapter

DFW's Membership

BASED ON SURVEY RESPONDENTS

64%

64% of members are over 65 years of age

99%

Nearly 99% identify as women.

94%

About 94% have a college undergrad or post-graduate degree

92%

92% identify as white

92%

92% are heterosexual; about 2.5% are LGBTQIA+

Member Age

OVER 74 YEARS OLD

16%

65 TO 74 YEARS OLD

48%

45 TO 64 YEARS OLD

31%

18 TO 44 YEARS OLD

5%

ND, Fargo-1 chapter



CA, Placentia-1 chapter

Women as Agents of Change

2019 International Women's Day

Women around the world are creating change in political, economic, social, and cultural arenas today. This was the inspiration for our 2019 International Women's Day (IWD) event, entitled "Women as Agents of Change".

Dining for Women partnered with [Peace is Loud](#), [The Association of Junior Leagues International](#), and [Georgia Public Broadcasting \(GPB\)](#) for a panel discussion and film screening.

Our three panelists were excellent examples of women creating change: [Abigail Disney](#), filmmaker, philanthropist, activist, and co-creator of the PBS series [Women, War & Peace](#); [Razia Jan](#), award-winning humanitarian and founder of DFW grantee [Razia's Ray of Hope](#) in Afghanistan; and [Elvia Raquéc](#), Program Director for [Women's Justice Initiative](#), a DFW grantee that is fueling social change in Guatemala.

The panel discussion was broadcast live to hundreds of DFW chapters and Junior Leagues across the country, as well as Peace is Loud and GPB supporters. Some DFW chapters also held their own local events to commemorate IWD.



Watch our "Women as Agents of Change" panel discussion by clicking here:

[VIEW DISCUSSION](#)



All photos credit: MadAngelPhotos/Peggy Baker

9

New Partnership Launched

PEACE
IS LOUD

Attendees at our Atlanta IWD event were treated to a screening of *A Journey Of A Thousand Miles: Peacekeepers*, one of the films that is part of the documentary series, *Women, War & Peace II*. We also launched a new collaborative partnership with Peace is Loud that allows for ongoing education and discussion about women as agents of change, especially in the area of peacebuilding. This partnership provides DFW chapters with the opportunity to hold public, educational screenings of the documentary series *Women, War & Peace II*, produced by Abigail Disney. *Women, War & Peace II* demonstrates how some of the biggest international stories of recent memory are shaped by women. An all-female cast of directors present four never-before-told stories about women who risked their lives for peace, changing history in the process.

WOMEN WAR & PEACE II



Photo credit: Diane M Evans Photography



Photo credit: MadAngelPhotos/Peggy Baker



Photo credit: MadAngelPhotos/Peggy Baker



Photo credit: Diane M Evans Photography

The Rancho Cordova, Davis, and Placerville, CA hosted a special event in partnership with local organizations.

10

2019 Grants

Featured Grants

Dining for Women awards 12 Featured Grants per year that range in amounts from \$35,000 to \$50,000. These projects are featured in educational materials and at monthly chapter meetings across the country.



Venture Strategies for Health and Development

NIGER • \$49,999

Creates safe space clubs to improve education outcomes, delay marriage and childbearing, and transform the lives of vulnerable, isolated adolescent girls in rural Niger.



Maji Safi Group

TANZANIA • \$49,995

Keeps adolescent girls in school and encourages leadership and self-esteem, while also reducing the cultural stigma around menstrual hygiene and providing sustainable menstrual cups.



Her Future Coalition

INDIA • \$49,200

Expands and supports three Red Light Area Resource Centers in Calcutta, where survivors of human trafficking and gender-based violence gain access to job training, employment, counseling, and informal education.



MindLeaps

MAURITANIA • \$47,840

Draws girls off the streets and away from risks such as prostitution by offering dance workshops, remedial education, psychosocial counseling, and nutritional support.



Razia's Ray of Hope

AFGHANISTAN • \$41,040

Trains midwives in order to increase women's access to maternal, prenatal, and neonatal healthcare services, resulting in better maternal and infant health outcomes.



Kakenya's Dream

KENYA • \$45,000

Empowers young Maasai girls, who are at risk for female genital mutilation/cutting (FGM/C) and early marriage, to stay in school and learn about sexual and reproductive health, child rights, and life and leadership skills.



Iqra Fund

PAKISTAN • \$42,398

Establishes a girls' middle school program in Pakistan's isolated Basha Valley by funding teachers, providing uniforms, books and supplies for the girls, and engaging the mothers in leadership workshops.



Brick by Brick Partners

UGANDA • \$50,000

Provides free transportation for laboring women to access health facilities and emergency obstetric care, thus reducing major obstetric complications and leading to better health outcomes for mothers and babies.



Edu-GIRLS

INDIA • \$37,650

Provides access to computers and critical information technology skills for girls so they are prepared for today's technology-driven job market.



Street Child US

NEPAL • \$49,180

Helps adolescent girls in remote areas to achieve functional literacy and numeracy, make sustainable transitions into meaningful employment, and develop confidence and awareness of their rights in order to reduce prejudice and sexual violence.



Young Heroes Foundation

SWAZILAND • \$45,000

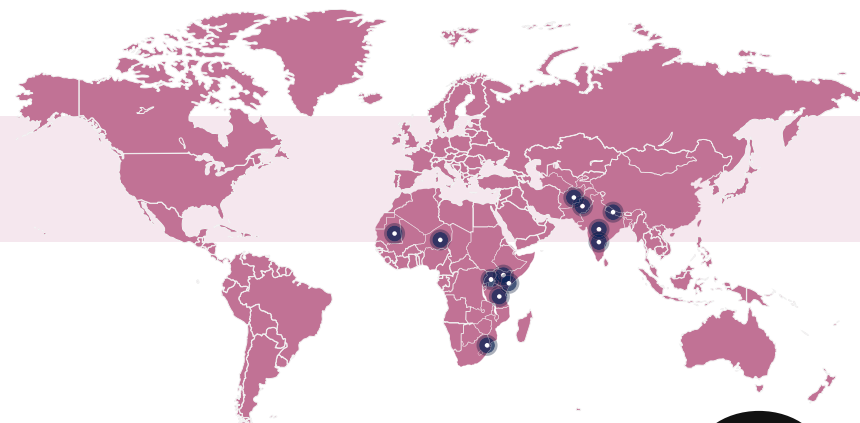
Alleviates poverty by teaching female caregivers (often grandmothers) of orphans and vulnerable children to become financially literate, and by creating the opportunity for them to become micro entrepreneurs so they can support themselves and their families.



Jacaranda Health

KENYA • \$47,000

Creates Kenya's first Nurse Mentor Training Center which allows top nurses from Kenya's public hospitals to mentor hundreds of peer nurses and sustainably improve maternal outcomes for mothers and babies.



Mapping the DFW
2019 Featured Grants

Sustained Grants 2019–2021

Through our Sustained Grants, DFW makes a larger, longer-term commitment to a previous Featured Grantee, resulting in a deeper impact for both the organization and the women and girls we support. In 2019, we increased the number of Sustained Grantees we funded from nine to 12, and also increased each grant from \$60,000 to \$75,000 over three years.



Integrate Health

TOGO

Recruits, trains, and equips female Community Health Workers to provide reproductive, maternal, newborn, and child health services, resulting in fewer deaths.



Catalyst Foundation

VIETNAM

Empowers women with dignity and health and provides families with daily access to safe water, proper sanitation, hygiene, and quality medical care.



African People and Wildlife

TANZANIA

Maintains “Living Walls” to ensure human and livestock security so women can pursue environmentally sustainable business opportunities, such as beekeeping, to better their families’ livelihoods.



Women’s Microfinance Initiative

UGANDA

Expands financial access for rural women by funding permanent revolving loans and developing the necessary infrastructure for women entrepreneurs to succeed.



Grandmother Project

SENEGAL

Expands and strengthens a grandmother-inclusive, intergenerational program to promote girls’ education and decrease child marriage, female genital mutilation/cutting (FGM/C), and teenage pregnancy.



Ripple Africa

MALAWI

Provides low-tech, fuel-efficient cook stoves to families in order to protect the environment, save lives, improve economic wellbeing, and empower women.



Community Cloud Forest Conservation

GUATEMALA

Equips local Q’eqchi’ Mayan women with the education and skills they need to lead their families and communities in sustainable development, while caring for and restoring the ecological integrity of their environment.



BlinkNow Foundation

NEPAL

Funds the Kopila Valley Women’s Center which empowers women, increasing not only their earning potential but also their belief in their own worth.



Healthright International Inc.

UGANDA

Expands mental health services to perinatal women in post-conflict settings, including South Sudanese refugee women in Uganda.



Collateral Repair Project

JORDAN

Fosters peace and reconciliation by educating and empowering refugee women and girls through targeted training, educational, leadership, and advocacy opportunities.



Bond Street Theatre

AFGHANISTAN, MYANMAR, MALAYSIA

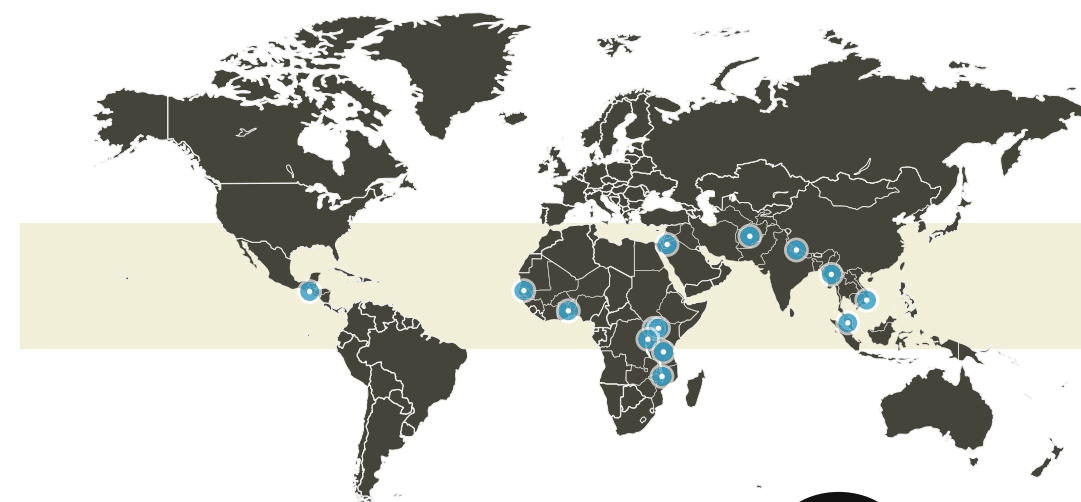
Gives women and girls in crisis areas the tools and training to speak out for equal rights through theatre, leadership and advocacy training, and informational performances in their communities.



Gardens for Health International

RWANDA

Prevents chronic malnutrition in pregnant women and children by using extensive nutrition education, excellent monitoring mechanisms, home visits, and assistance in growing nutritious food.



Mapping the DFW
2019–2021 Sustained Grants

UNICEF Partnership

Since 2017, Dining for Women has partnered with [UNICEF USA](#) to provide urgent support to refugee women and girls around the world.

In 2019, we embarked on a new, \$100,000 [project](#) to improve the maternal and newborn health of Rohingya refugees in Cox's Bazaar, Bangladesh. The project will help strengthen referral systems to improve access to health centers and district hospitals for pregnant Rohingya women and babies. It will also help improve the quality of newborn care and safe delivery practices at 19 primary and three secondary care facilities. In addition, this project will prevent potential disease outbreaks in Cox's Bazaar by improving cold chain management systems to keep vaccines at the proper temperature throughout their transit.



Photo credit: ©UNICEF/UN0158177/Sujan

Who are the Rohingya?

- A mostly-Muslim ethnic group.
- Lived for centuries in the majority Buddhist Myanmar.
- One of the most persecuted minorities.
- Denied citizenship by the Myanmar government.
- Since August 2017, more than 700,000 Rohingya have fled to Bangladesh to escape unspeakable violence in Myanmar.

UNICEF Youth Summit



Our partnership contributes to improving the health care and long-term well-being of approximately 72,500 pregnant and lactating women who have arrived at the refugee camps, and more than 700,000 children needing humanitarian assistance.

As part of our partnership with UNICEF USA, DFW has previously funded projects for Syrian refugee women in [Jordan](#) and for internally displaced women in [South Sudan](#).



Photo credit: ©UNICEF/UN0203368/Sokol

"Around 60 babies a day are taking their first breath in appalling conditions, away from home, to mothers who have survived displacement, violence, trauma and, at times, rape. This is far from the best start in life."

UNICEF REPRESENTATIVE
IN BANGLADESH

Impact of 2019 Grants & Partnerships

Through our Featured Grants and our UNICEF Partnership, we directly impacted **23,550 women and girls** and indirectly impacted **425,333 family and community members**.



Multi-Year Impact of our 2019-2021 Sustained Grants

Over the three-year period of these grants, we will directly impact **64,314 women and girls** and indirectly impact **177,358 family and community members**.

■ **13,490**

girls used the confidence, knowledge, and leadership skills they gained during sexual and reproductive health workshops to break down barriers to girls' education in their communities.

■ **6,281**

pregnant women benefited from a community-wide effort to streamline transportation and access to timely and quality care designed to enhance maternal outcomes.

■ **2,640**

women and girls at risk for gender-based violence (GBV) in South Sudan benefited from therapeutic services, awareness campaigns, and GBV mitigation efforts.

■ **887**

young, marginalized girls broke through barriers of culture, seclusion, caste, and gender and found refuge in safe spaces where they were mentored, offered training, and dreamed of brighter futures.

■ **795**

mothers and grandmothers received vocational training to enhance their economic independence to better care for their vulnerable children and grandchildren.

■ **350**

medical professionals were trained to be better midwives and nurses to serve their communities in improving maternal child health.

■ **307**

young girls in hard-to-reach communities overcame barriers of class, gender, and geographical isolation to pursue their dreams of a holistic education with vocational and technical training.

■ **120**

at-risk girls leaped forward using dance to enhance their cognitive skills, social-emotional learning, and preparation for formal schooling.

Member Travel Program

As part of Dining for Women's commitment to learning, we offer several trips each year in order to deepen members' understanding of the issues facing women and girls globally.

The trips give members the opportunity to connect face-to-face with the work of our grantees and the women and girls impacted, while also building a special community amongst travelers. In 2019, Dining for Women travelers visited Kenya, Bhutan, and Peru.

Kenya

Our DFW travelers forged powerful connections with the inspiring work of several of our Kenyan grantees: [Shining Hope for Communities \(SHOFCO\)](#), [RefuSHE](#), [Kenya Self-Help Project](#), and [Wiser International](#). They left this adventure with a deeper understanding and appreciation of this fabulously intricate and enchanting country and the women and girls who inhabit it. Their journey was topped off with two days on safari, enjoying the endless plains and wildlife of the Mara.

Many of our Kenya travelers stayed connected with the grantees they visited. Several became local "aunts" for SHOFCO students who are attending boarding school in the U.S. Others provided much-needed improvements and supplies for a classroom used by Kenya Self-Help.

"More than anything, I felt the warm welcome of the Kenyan people, with a smile that came from the heart and was seen in the eyes."

KENYA TRAVELER



[Elevate Destinations](#) specializes in designing and implementing travel programs for nonprofit organizations while empowering and respecting the local destinations. They are a leader in the field of sustainable travel, and their trips include the most responsible travel guidelines available, including proactive conservation, lodging with a purpose, carbon offsetting, and prevention of human trafficking and human rights abuses.



Bhutan

Our Bhutan program was so popular with DFW travelers that we filled two separate trips! Each journey offered a holistic view of the cultural and traditional evolution of women's roles at home and in public spaces. Travelers explored how these roles have changed due to modernization and democracy in relation to the country's guiding philosophy of Gross National Happiness (GNH). They experienced the beauty of Bhutan and saw firsthand the work being done at multiple [READ Bhutan](#) centers – DFW's first grantee in Bhutan.



"The sights, the sounds (even the barking), the smells and generosity of the Bhutanese people will be imprinted on my mind forever."

BHUTAN TRAVELER



Peru

From Inca ruins high in the Andes Mountains to the beautiful lush fields of the Sacred Valley, Peru's ancient stories drew our DFW travelers into this intoxicating destination. Sixteen travelers explored and learned about the ancient history of the Inca and how the past translates into modern-day life for rural women and girls in this incredibly beautiful and diverse country. Highlights included participating in service projects with DFW grantees [Chicuchas Wasi School for Girls](#) and [Sacred Valley Health](#), as well as visiting iconic Machu Picchu.

Advocacy

Grassroots advocacy is an effective way to influence U.S. policies and funding on issues that affect millions of women and girls around the world. Through our Advocacy Program, members are empowered to deepen their engagement and multiply their impact on gender equality issues.

In 2019, in order to be the most effective and efficient with Dining for Women’s resources, our Advocacy Committee explored the possibility of partnering with other organizations who have expertise in grassroots advocacy and the issues that DFW cares about. The committee began discussions with [RESULTS](#), a non-profit, non-partisan advocacy organization focusing on ending poverty. RESULTS is a movement of passionate, committed, everyday people, just like DFW! They have been advocating effectively for 40 years, and are leading the way in developing positive, bi-lateral relationships to effect change.

Our Advocacy Committee held a series of workshops for members in Greenville, SC, Philadelphia, PA, and San Francisco, CA. The workshops provided an overview of RESULTS, hands-on training in effective advocacy, and a facilitated discussion about how the RESULTS approach could be utilized within DFW. Based on the outcome of our response and member response to the workshops, DFW entered into a strategic partnership with RESULTS in early 2020.

With this partnership, we have established a national [DFW Advocacy Chapter With RESULTS](#) that is open to all DFW members across the country. RESULTS offers training, support, and inspiration to help DFW members become skilled advocates, and provides background information and action steps that will impact millions of women and girls.



DFW is also a member of and participates in the advocacy actions of the following:



InterAction is the largest alliance of international nongovernmental organizations (NGOs) and partners in the U.S. focused on the world’s poor and most vulnerable.



United States Global Leadership Coalition (USGLC) is a broad-based, non-partisan network of business, military, faith, and political leaders who support strategic investments in global development and diplomacy in order to build a better, safer world.



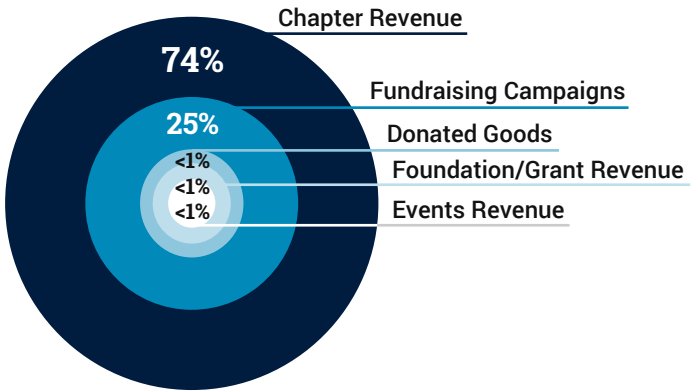
CO, Cherry Creek-1 chapter

2019 Financial Overview

Dining for Women is committed to the highest standards of financial management and transparency.



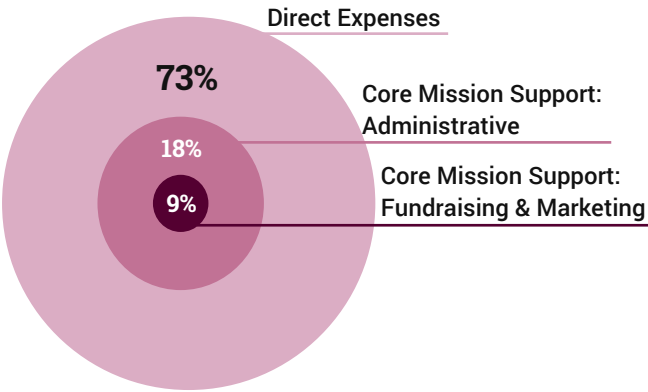
2019 REVENUE



| | | |
|---------------------------------------|--------------------|-------------|
| Chapter Revenue | \$1,487,136 | 74% |
| Fundraising Campaigns ¹ | \$500,535 | 25% |
| Donated Goods ² | \$20,000 | <1% |
| Foundation/Grant Revenue ³ | \$14,000 | <1% |
| Events Revenue | \$627 | <1% |
| Total Revenue | \$2,022,298 | 100% |

¹ Includes proceeds from annual appeal.
² Donation of office furniture.
³ Additional funds from foundations and corporations (listed on page 28) are included in Chapter Donations and Fundraising Campaigns.

2019 EXPENSES



| | | |
|-----------------------------------------------------------|--------------------------------|-------------|
| Direct Expenses ⁴ | \$1,521,706 | 73% |
| Core Mission Support Administrative ⁵ | \$379,388 | 18% |
| Core Mission Support Fundraising & Marketing ⁵ | \$176,468 | 9% |
| Total Expenses | \$2,077,562⁶ | 100% |

⁴ Direct Expenses are those costs directly related to running our four programs: Grants, Partnerships, Member Education and Engagement, and Advocacy. These expenses include the actual payment of our Featured, Sustained, and Partnership Grants as well as the cost of managing all four of our programs.

⁵ Core Mission Support is critically important to our operations. Examples include rent, insurance, licensing and permits, financial management, staff training and development, information technology, donor/member management systems, fundraising/marketing materials and services, and donor development.
⁶ Expenses were \$55,234 more than revenue, but in 2018 revenue exceeded expenses by \$193,000. Cash balances remain healthy.



ADDITIONAL FINANCIAL INFORMATION

2019 FORM 990

2019 AUDIT

Dining for Women Board & Staff

AS OF 12.31.19

Board of Directors

- Barb Collins, Co-Founder**
Greenville, SC
- Dr. Shaniece Criss**
Greenville, SC
- Tara O'Connor LaRose**
Plainwell, MI
- Susan Stall, Chair**
Greenville, SC
- Jo DeBolt**
Pittsburgh, PA
- Carrie Hessler-Radelet**
Falls Church, VA
- Lynn O'Connell, Vice Chair**
Alexandria, VA
- Sarah Durry**
Atlanta, GA
- Cynthia Radford**
Travelers Rest, SC
- Kathy Fitts, Treasurer**
Woodstock, GA
- Carol Dillon Kissal**
Washington, DC
- Melinda Silverstein**
Santa Cruz, CA
- Caren Senter, Secretary**
Greenville, SC
- Renee Losh**
Scottsdale, AZ
- Betsy Teutsch**
Philadelphia, PA



Advisory Committee Members

- Corinne Blakemore**
Grants & Partnerships Oversight Committee
- Cheryl Holland**
Resource Development Committee
- Connie Lewin**
Member Education & Engagement Committee
- Susan Negrin**
Member Education & Engagement Committee
- Justine Allen**
Member Engagement Coordinator
- Lena Dunham**
Administrative Coordinator
- Wendy Frattolin**
Communications & Membership Director
- Beth Ellen Holimon**
CEO and President
- Dr. Veena Khandke**
Director of Grants & Partnerships
- Gina League**
Director of Administration
- Harriet Ligon**
Accounting & Data Associate
- Leslie Mason**
Accounting Specialist
- Amy West Moore**
Technology Coordinator



SC, Greenville-1 chapter

Education/ Grants Team*

- Elizabeth Anderson**
- Jessica Fowler**
- Megan Pomphrey**
- Chris Worthy**

**Part-time contractors*

GA, Augusta-2 chapter



Our Volunteer Leaders

AS OF 12.31.19

Regional Leaders

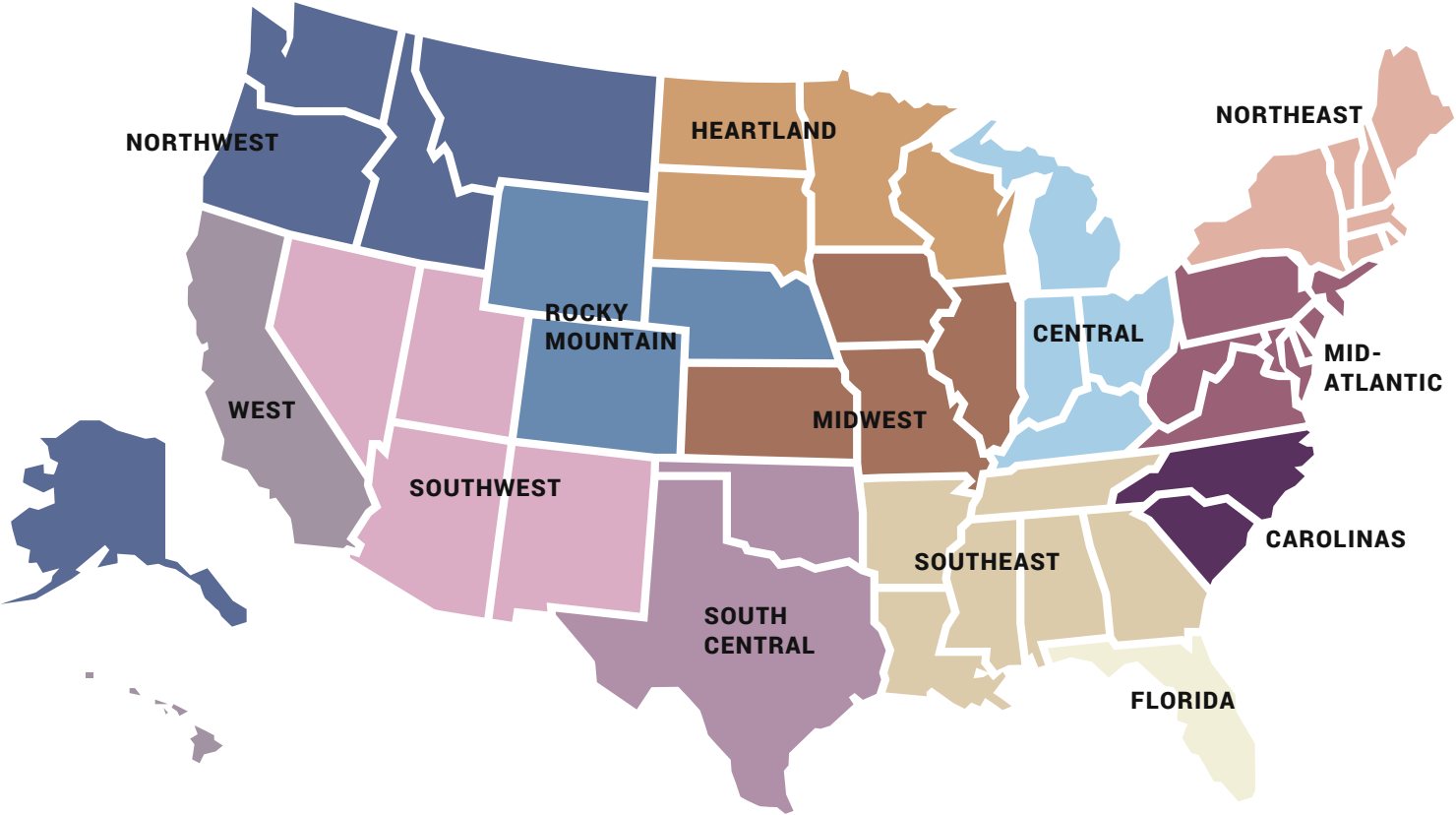
| | | |
|------------------------------------------|--------------------------------------------|-----------------------------------------|
| Anna Schoon Chair | Merle Steiner Mid-Atlantic | Linda Schneckenberg Southeast |
| Julia Edelson Carolinas | Susan Prener Northeast | Colleen Kill West |
| Meredith Stoudenmire Carolinas | Kathy Williams Northeast | Patricia Payne West |
| Tamara Peterson Central | Karen McCune Northwest | Retired in 2019 |
| Rachel Peterson Central | Betty Purkey-Huck Rocky Mountain | Corinne Blakemore |
| Jan Richards Florida | Mary Romano Rocky Mountain | Sybbie Fox |
| Donna Neshek Heartland | Kasey Henry South Central | Tammy Frazier |
| Annette Hearing Mid-Atlantic | Terri Abraham Southeast | Peggy Smith |



Our volunteer
Regional Leaders

Mentors

| | | |
|-------------------------------------------------------------------------------------------------------------------------------------------------------------------------------------------------------|-------------------------------------------------------------------------------------------------------------------------------|---------------------------------------------------------------------------------------------------------------------|
| Carolinas Tricia Malinowski Marnie Walsh | Midwest Sophia DuBrul Mary Caroline Mitchell Jennifer O’Neil | Southeast Linda Bodine Jennifer Walters |
| Central Mary Toneff Kim Whetstone | Northeast Ruth Bates Leslye Heilig Michele Krieg Bauer Barbara Myers Barbara Quine-Moran Jan Zimbler | West Laura Burnett Diane Glaser Julie Kassan Jenna Rodeawald Ingrid Rosten Cynthia Sawtell |
| Florida Beth Palmer Kay Yoder | Northwest Lynn Kellogg Jane Newby Tami Savage Kathy Young | Heartland |
| Mid-Atlantic Shereen Arent Dianne Blais Elaine Butterfoss Judy Christensen Sylvia Gentry Rosemary McGee Brenda Mellon Sylvie Meyers Laurie Stroope Betsy Teutsch | Rocky Mountain Thora Pabst | South Central |
| | | Southwest |



Panel of Experts

Dr. Angela Eikenberry
David C. Scott Diamond Alumni
Professor of Public Affairs

School of Public Administration,
University of Nebraska at Omaha

Author of *Giving Circles: Philanthropy, Voluntary Association, Democracy*

Ambassador Steven E. Steiner (Ret.)
Affiliate and Former Gender Advisor,
United States Institute of Peace



Our volunteer Grant Selection Committee

Grant Selection Committee

Lynn O'Connell, *Chair*
Jada Anderson
Shereen Arent
Linda Baxter
Brigid Blake
Corinne Blakemore
Lynn Broadbent
Cathy Caldwell
Lindy Cater
Gayle Felbain
Sue Malick
Julia Manning
Celeste Medina
Jeanne Miller
Clare O'Brien
Elizabeth Scott Osborne

Retired in 2019

Debra Baulduff

Advocacy Committee

Leslye Heilig, *Chair*
Jim Hennigan
Nancy Jacobsen
Chris King

Diversity, Equity & Inclusion Committee

Barbara Chatzkel, *Chair*
Shontel Babb
Cathy Hammoud
Rizwana Khader
Kathy Shearer
Melesa Treize
Leah Victorino
Denise Woods

Education Team

Tracy Barr
Deborah Fisk
Vinola Munyon
Marie Narlock
Georgia Reader
Kathy Williams

Grantee Reports Team

Ellie Bisese
Amelia Miles
Annie Weaver

Founders' Circle

AS OF 12.31.19

Catalysts (\$50,000+)

Tara O'Connor LaRose

Innovators (\$10,000+)

Corinne Blakemore
Linda Byars
Anne Capestrain | Tracy
Family Foundation
Renee Losh
Susan & Russell Stall

Investors (\$5,000+)

William Browne
Polly Dunn
Rhonda Graber
Susan Kepner (IL)
Colleen Kill
Marilyn & Stephen Kohler
Sue Malick
Trudi Sommerfield
Connie Williamson

Advocates (\$2,500+)

Jeannette Artini
Maryann Boehmke
Lindy Cater
Francine Fleming
Suzanne Frye
Jane Gennrich
Sandy Lease & David Hugg
Marie Narlock
Lynn O'Connell
Tami Savage
Maryanne Schiller
Sue Scollo
Betsy Teutsch
Lee Tracy
Fran Wolff

Sustainers (\$1,000+)

Angie Acakpo-Satchivi
Bobbie Aitchison
Lynne Anderson
Shereen Arent
Anne Arjani
Judy Bacon
Guniya Bafna
Deborah Baker (CA)
Nanci Ann Banninger
Louise Barnett
Ruth Bates
Wilma Bates
Danielle Beach
Nancy Benardete
Alice Bentley
Sarah Billups
Catriona Binder-Macleod
Whitney Bischoff
Brigid Blake
Dale Boercker
Katie Boland
Claudia Bonilla
Helen Borland | Joseph W.
Kiskel Charitable Fund
Francoise Bourdon
Sharon Bower
Annette Bowers
Mary Broude
Arden Brugger
Deb Bryant
Gail Burchard
Vicky Bush-Joseph
Elaine Butterfoss
Althea Callaway
Stacey Cameron
Gail Caulkins
Marie Cecil
Sherry Centanni
Debbie Chance
Adrienne Cohen
Barb & Greg Collins
Anne Conlan
Christel Cothran
Cathryn Cox
Pat Cox Diem

Bernadette Cronin-Geller
Barbara & Robert Crooke
Elaine Daly
Jo DeBolt
Deborah Defilippo
Harriet Dichter
Linda Dougall
Betsy Dunklin & Charles Cole
Cindy Dyballa | The Nadel Family
Charitable Fund
Laura Eckhardt
Fadya El Rayess
Danna English
Karen Faunt
Gretje Ferguson
Sue Fernbach
Joan Finnigan
Lisa Fiore
Kathy Fitts
Margaret Fitzgerald Bare
Karin Ford
Wanda Ginner
Susan Goldby
Judy Greenspon
Billie Greenwood
Sandra Gren
Mary Griesedieck
Dionis Griffin
Barbara Griswold
Jenn Gudebski
Jennifer Hammer
Sheila Hanz
Sally Harris
Jane & Fred Harvey
Janet Hatmaker
Bonnie Hay
Jean Helwig
Emma Herman
Carrie Hessler-Radelet
Barbara Hill (CA)
Dragonfly Fund
Barry Hoffner | Hoffner
Charitable Fund
Cheryl Holland
Gayle Horn
Chenho Huang



IL, Wilmette-1 chapter



Tiki Hubbard
Debbie Huynh
Annie Iriye
Lynda Johnson
Karen Jordan
Natha Katz
Kelly Keate
Linda Kerr-Saville
Chris King
Carol Dillon Kissal
Laurie Kobor
Christy Lamb
Pamela Lane
Joyce Laswell
Amy Madsen
Joan Mateker
Peggy McCaffrey
Karen McCune
Colleen McQueen
Birgit Meyer
Andrea Michaels
Lorraine Miller-Wolf
Mary Caroline Mitchell
Deborah Monaco
Anne Moorman
Cynthia Morrow
Judy Nardacci
Susan Negrin
Donna Neshek

Peggy Newell
Susan Olson
Patricia Payne
Stephanie Perrett
Anna Pujol
Betty Purkey-Huck
Cynthia Radford
Monica Roberson
Virginia Lee Roberts
Karen Rowley
Francine Roy
Walta Ruff
Jackie Saber
Marjorie Safran
Shannon Santee
Susan Santoro
Cynthia Sawtell
Lois Schaper
Jean Schmidt
Caren Senter
Neeti Sharma
Donna Shaver
Kathleen Shearer
Joyce Shields
Ellen Shuck
Melinda Silverstein
Brenda Skelly
Carel Slatkoff
Mary H Smith (CA)

Diane Smock & Brad Wyche
Susan Sogard
Jody Spraker Pozen
Emily Squyer
Steven & Merle Steiner
Bill Stephenson
Jill Stoliker
Nancy Sullivan
Margaret Tabar
Sherry Taylor (CA)
Betsy Teutsch
Susan Thomas (VA)
Linda Twomey
Jackie Verity | Ayco
Charitable Foundation
Laurie & Brad Vroom
Barbara Wagner
Linda Wagner (CO)
Elizabeth Wagoner
Sandy Ward
Judith Warner
Wendy Wheeler (MA)
Karen Whitney
Carolyn Wier
Rhonda Willies | Willies
Family Foundation
Jacqueline Wilson

Corporations, Foundations, & Organizations



ID, Boise-1
chapter

Legacy Society

The following donors have included a legacy gift to DFW in their wills.

Jeannette Artini
Linda Besant
Helen Borland
Cindy Campbell (FL)
Barb Collins
Moira Donoghue
Sue Fernbach
Jane Gennrich
Diane Glaser
Jane Harvey
Colleen Kill

Susan Kincaid
Sylvie Meyers
Marilyn Murphy
Susan Negrin
Lynn O'Connell
Francine Roy
Mary-Jane Sackett
Cynthia Sawtell
Susan Stall
Betsy Teutsch
Linda Wagner (CO)



\$10,000+

Journey Charitable Foundation
Morgan Stanley
Tracy Family Foundation

\$5,000+

Trade Fair Marketplace

\$1,000+

Alternative Gifts of Greater
Washington
Amplifier FJC
Ayco Charitable Foundation
BeadForLife
Charles Schwab
Impact Assets
JetBlue CSR
Pontiki LLC Jupiter
Rockefeller & Co
Vanguard Marketing Corporation
Wave Foundation

\$500+

Maadili Collective
McCormack Plastic Surgery
Merrill Lynch
Raymond James Global Account
Renaissance Charitable Foundation
West Grove Religious Society
of Friends

Up to \$499

Alex and Ani
Beautykind Foundation
Blondie's Coffee House
BNY Mellon
Body Soul Therapy
Bunnies Unlimited LLC
Butler Tillman Express Trucking
Camelback Safaris
Fidelity Investments
First Presbyterian Church
Shelbyville, KY
Girl Scouts of Northern California
Greater Horizons
Hoen's Greenhouse Inc

Horizons Foundation
Jenna Bayer Garden Design Inc
Karisma Boutique
Lake Oswego United Church
of Christ
Macwest Marketing LLC
Oil & Vinegar Store
On-Camera Audiences Inc
Padua Academy
Purpose Boutique LLC
Quartz Hill Women's Club
Saint Giles Presbyterian Church
Greenville, SC
Sister ACTS
Spice of Africa LLC
St Jude's Episcopal Church Cedar
City, UT
Stick's Interior Decoration LLC
Ten Thousand Villages Akron, OH
Ten Thousand Villages
Greensboro, NC
The Omnology Group

Matching Gifts

Accenture LLP
Adobe Systems, Inc.
America's Charities
Ameriprise Financial
Amgen Foundation
B D Associate Matching
Gifts Program
Benevity Inc
Boeing Company Gift Match
Booz Allen Hamilton
c/o Cybergrants
Causecast Regeneron
Charles Schwab Foundation
Cybergrants on Behalf of
Lawrence Livermore National
Laboratory
GE Foundation
JLL Community Connections
Johnson & Johnson Matching
Gifts Program
JP Morgan Chase & Co
Merck Foundation
Microsoft Matching Gifts Program
Shell Oil Company Matching Gifts
The Benevity Community Impact
Fund | Apple Matching
Gifts Program
The Benevity Community Impact
Fund | Genentech
The Benevity Community Impact
Fund | Google Inc
The Benevity Community Impact
Fund | UnitedHealth Group
The Benevity Community Impact
Fund | Workday Inc
Varian Medical Systems
YourCause
YourCause | Pacific Gas & Electric
YourCause | Thermo Fisher
YourCause | United Airlines

Cause Marketing Partners

Aid Through Trade
Anchal Project
BeadforLife
Bird + Stone
Betsy Teutsch
Darzah
Friendship Bridge
Haiti Projects
Huaywasi
TisBest Philanthropy
Women's Peace Collection

In-Kind Donors

GE Power Systems
Greenleaf Consulting International
Microsoft
Nelson Mullins
Quality Business Solutions
Salesforce Foundation
YellaSoft



Donors

\$750–999

Terri Abraham
Ellen Benson
Sylvia Betts
Ann Brinker
Julia Brugliera
Cathy Caldwell
Lorraine Cino
Judi Crane
Ginger Creevy
Michelle Crow
Mary Cullen
Eileen Donnelly
Dianne Dryer
Sheila Dunn
Linda Frederick
Barbara Gervis | The Estelle
Friedman Gervis Charitable
Foundation Inc
Linda Hazelton
Florae Helmstetter
Suki Hoagland
Beth Ellen Holimon
Judi Jessen
Alissa Johnson
Madeleine Johnson
Judith Kampfner
Lisa Keamy

\$500–749

Marty Abbott
Karen Abrams
Lynne Adams
Maryellen Alviti
Mary Amdahl
Minoti Amin
Karyn Anderson
Susan Anderson (MT)
Wendy Anderson
Leigh Andrews
Linda Andrews
Julia Ansberry
Cindy Ariel
Kathleen Attwood
Nancy Ault



Renee LeClair
Patti Lee
Margie Lehrman
Lee Lindsay
Nancy Lofaro
Victoria Lustbader
Joyce McMurray
Barbara Merrell
Sylvie Meyers
Joan Monts
Jacqueline Morrill
Susan Nash
Joan Nicholas
Patricia O'Neil
Carol Ozier
Karen Perlroth
Caryl Pettit
Srividya Prakash

Jane Avni
Johanna Balzer
Juliann Bannon
Kathy Barclay
Traci Barr
Claire Barrocas
Kendra Bartley
Marilyn Battiste
Sally Batz
Mary Beaumont
Cherie Beckstrom
Catherine Bennington Jenrette
Andra Benson
Wendy Bensussen
Amy Bentley

Susan & Don Ray
Shirley Rogers
Mona Roussey
Diana Ryan
Eileen Salenik
Kathy Seaman
Christine Sederstrom
Frann Shore
Susan Tom
Carolyn Van Helden
Cathryn Wasson
Mary Weber
Beth White
Nancy Winslow
Cheryl Zaccaro
Priscilla Zambor
Helene Zelaya

Molly Bentsen
Kathy Benya
Jennifer Berg
Recha Bergstrom
Joni Berinstein
Terri Berish
Leyna Bernstein
Susan Blackmon
Zdenka Bleile
Memory Blodgett
Linda Bodine
Hinda Bodinger
Linda Bondurant
Alexis Borucke
Robin Boston

Margot Bradley
Maggie Brand
Bruce Brandle
Darlene Braunschneider
Ann Brenner
Deborah Britt
Lynn Broadbent
Christina Brockman
Shelley Brosnan
Mary Brower
Ann Brown
Joann Brown
Ruth Brown
Yasamin Brown
Cheryl Bruckner
Nancye Buelow
Nancy Bunn
Linda Sue Butterwick
Trish Buzan
Jane Cain
Eileen Callaway
Cindy Campbell (FL)
Cynthia Campbell (CA)
Dee Caplan
Royanna Carle
Cynthia Carpenter
Carolyn Casey
Sheila Cassels
Meg Castro
Gail Chaid
Jane Chandra
Danuta Charwat McCall
Ellen Chase
Gail Cheda
Mary Louise Chesley Cora
Carol Chillemi
Shari Clare
Maureen Clark
Sandy Clark
David Clement
Sheila Colosi
Janine Conner
Barbara Conti Boehly

Paul Conway
Christina Coulourides
Anita Courtney
Carol Courville
Donna Cowden
Mary Sue Curry
Debbie Daehnick
Lue Daughenbaugh
Suzana De Camargo
Janet Delmore
Edna Devore
Rita Dickinson
Jane Divinski
Margaret Divish
Elizabeth Dodson
Moirra Donoghue
Kelley Dunn
Martha DuroShea
Dawn Dwyer
Jerrie Earthman
Celeste Eaton
Claire Eberle
Anna Eddy
Julia Edelson
Gretta Edwards
Hannah Edwards
Elaine Eichelberger
Virginia Eilers
Laura Ellingson
Eileen Emerson
Bonnie & Mike Emerson
Joan Erickson
Debbie Ernst
Angie Esteve
Pamela Feinstein
Sarah Fessler
Susan Fisher
Thayer Fleming
Laurie Flynn
Frances Foley
Paula Fong
Mary Force
Barbara Ford (WA)

Marlane Forsberg
Janice Franz
Tammy Frazier
Patty Frommell
Mary Beth Garber
Sue Garcia
Susan Garrity
Christine Garst
Susan Gellman
Laurie Gentry
Kathi George
Sharon Gidumal
Maggie Glasgow
Kathy Goltz
Linda Goodman
Sandra Gravitt
Gayle Gray
Carole Green
Lisa Green (NC)
Shaunriel Green
Joanne Greenawald
Lori Greenawalt
Diana Greene
Laurie Gregory
Rhonda Grissom
Kim Gruber
Kristin Guest
Christina Hadjoannou
Mary Halcomb
Ann Hamilton
Melissa Hansen
Barbara A Harris (IL)
Rebekah Harris
Annette Hearing
Patricia Hearron
Marianne Heath
Peg Heetmann
Leslye Heilig
Anne-Reneé Heningburg
Cindy Henry
Sophia Hermann
Lucrecia Herr
Cecia Hess

Elizabeth Hirsh
Monica Honegger
Janis Hopson
Ellen Horsman
Joanne Houghton
Sandra Houston (AR)
Michelle Howell
Dale Hromadka
Lisa Huntting
Erin Husen
Marcia Iole
Janet Jacobs
Judy Jaffie
Margaret James
Christine Jansen
Ellen Jennings
Candace Jenny
Mary Liz Jones
Inez Kalin
Lynn Kampfer
Mary Kane
Megan Kane
Patty Karabatsos
Lauren Kaufman
Martha Kaufman
Helen Keane
Nancy Kent
Lisa Kerley
Aleta Kerrick
Veena Khandke
Janice Kilburn
Heike Kilian
Cathy Kim
Julie Klaper
Sheri Klein
Cindy Knul
Carolyn Kopel
Michele Krieg Bauer
Denette Kuhlman
Jane Laclergue
Victoria LaFortune
Julie Lambert
Cathy Lampman
Jennifer Liccardo

Jeanette Lieb
Nancy Light
Christina Lindstrom
Nancy Logan
Barb Long (OH)
Gloria Loreda
Sandra & Michael Lorion
Nancy Lorr
Andrea Love
Jean Lowe
Marion Lynch
Marlene Macfarlane
Sharon Maher
Jane Mairose
Lori & Frank Maitiski
Lisa Mann
Julia Manning
James Marsey
Karen Martin (VA)
Ruth Martin
Attilio Mastrangelo
Karen Mathers
Jeanne Mayes
Charlotte McBurney
Teresa McCanlies
Annette McDermott
Jennifer McDermott
Linda McElroy
Melanie McGee
Mary Lou McGinnis
Sarah McKenzie
Sherril McKeown
Patti McNay
Vicki Megginson
Rebecca Metzger
Jane Miller (PA)
Jeanne Miller
Lorin Miller
Jules Millogo
Mary Mitro
Sandra Moll
Wendy Moonan
Barbara Moore (VA)
Mary Moore (WA)

Sue Moore
Joanne Moran
Janice Morgan
Caroline Morse
Helen Moynihan
Bonnie Mueller
Kathy Muldoon
Carol Napier (NY)
William Newman
Mary Elise Nolen
Jennifer O'Neil
Mary Oakley
Cindy & Gary Oberman
Gretta OConnell Collins
Christine Oleary-Eldred
Sharon Padilla
Lourdes Page
Nora Paller
Beth Palmer
Diana Pearce
Renita Pearce
Anna Pearson
Jill Peirce
Louise Persson
Karen Pesch
Carla Peterson
Tamara Peterson
Connie Philpot
Heather Plastaras
Paula Porter
Susan Prener
Jo Prostko
Tracy Quinn
Jean Raga
Ann Rawsky
Claire Reade
Heather Ribbs
Jan Richards
Betsy Riddell
Tracy Ritter
Jennifer Roberts
Kim Roberts
Margaret Roberts
Ann Robinson (CA)



OH, Hudson-1
chapter





Mary Rogers (MA)
 Marilyn Rosche
 Laura Rose
 Barbara Rosen
 Jennifer Rudolph
 Debra Ruehlman
 Mary-Jane Sackett
 Wendy Jo Sandweiss
 Carol Schult
 Cathy Schultz (CA)
 MaryAnn Scott
 Marcia Selva
 Linda Shatz-Levenson
 Lena Shealayno'sun
 Cynthia Shields
 Bruce Anne Shook
 Marcia Sill
 Diane Sisko
 Rosemary Smith
 Kristin Spear
 Theresa Spear
 Prudy Squier
 Susan Stamerjohn
 Anne Marie Stamford
 Claire Steinberg
 Carolyn Stevenson
 Meredith Stoudenmire
 Laurie Stroope
 Connie Sullivan
 Kathleen Svabek
 Lisa Swallow
 Penny Swanson
 Mary Sweeney
 Mary Beth Sweet
 Camille Thomas
 Heather Thompson
 Charlotte Thunen
 Rita Tolvanen
 Marsha Torkelson
 Dori Touchton

Wanda Tracy
 Nancy Truluck
 Sarasina Tuchen
 Marybeth Tyler
 Najia Usman
 Virgie Vakil
 JoAnna VanderKolk
 Michiel and Jane Van
 Schaardenburg
 Anita Vieira
 Nancy Vincent
 Mary Claire Voss
 Lisa Wade
 Jennifer Walker
 Libby Walker
 Kathleen Walsh
 Marnie Walsh
 Ellie Wasserman
 Malvina Wasserman
 Denise Weiner
 Sherri West
 Lawson Wetli
 Kim Whetstone
 Betsy White
 Linda Wilcox
 Mary Jane Wilcox
 Ann Williams (PA)
 Harriet Williams (PA)
 Kathy Williams
 Judy Winslow
 Carol Wood
 Susan Wright (Oakland, CA)
 Kelly Wyatt
 Carol Yetter
 Kay Yoder
 Marti Zontek

A complete
 list of 2019
 donors is
 available here:

DONOR LIST

MA, Burlington-1 chapter



Join Us!

- MAKE** a one-time donation. ➤
- SET UP** monthly giving. ➤
- START** your own DFW chapter. ➤
- JOIN** a chapter in your area. ➤
- CONNECT** with our monthly virtual chapter meetings. ➤
- SIGN UP** for our monthly e-newsletter. ➤

 Dining
for
Women

 /DiningforWomen

 @DineforWomen

 @diningforwomen

 /company/dfw

P.O. Box 25633
 Greenville, SC 29616
 864.335.8401

INFO@DININGFORWOMEN.ORG

diningforwomen.org



KS, Prairie Village-1
 chapter

